

PRODUCT INDEX

Wheelchairs

Ambulatory Aids

Bath Safety

Personal Care

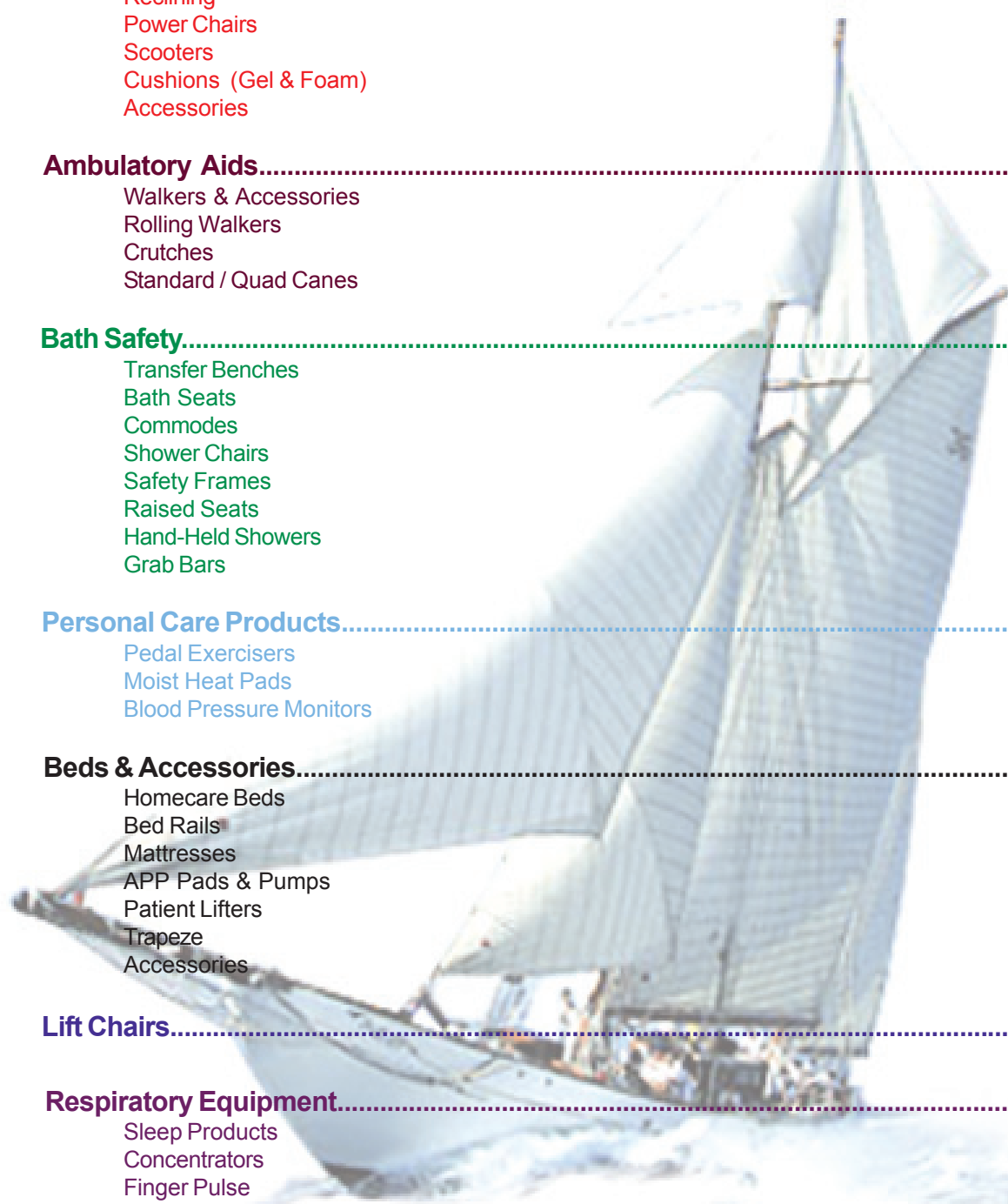
Beds & Accessories

Lift Chairs

Respiratory

LMI

Wheelchairs	4-14
Standard	4
Lightweight	5 - 6
Heavy Duty	7 - 8
Transport	9
Reclining	9
Power Chairs	10
Scooters	11
Cushions (Gel & Foam)	12 - 13
Accessories	14
Ambulatory Aids	15-25
Walkers & Accessories	15-18
Rolling Walkers	18-20
Crutches	21-22
Standard / Quad Canes	23-25
Bath Safety	26-36
Transfer Benches	26-27
Bath Seats	28-29
Commodes	30-33
Shower Chairs	34
Safety Frames	34
Raised Seats	35
Hand-Held Showers	36
Grab Bars	36
Personal Care Products	37-38
Pedal Exercisers	37
Moist Heat Pads	37-38
Blood Pressure Monitors	38
Beds & Accessories	39-44
Homecare Beds	39-40
Bed Rails	41
Mattresses	41
APP Pads & Pumps	42
Patient Lifters	42 - 43
Trapeze	44
Accessories	44
Lift Chairs	45-46
Respiratory Equipment	47-52
Sleep Products	47
Concentrators	48
Finger Pulse	48
Suction Machines	48
Oxygen Cylinders & Holders	49
Compressors & Nebulizers	49
Tubing & Masks	50-51
Oxygen Racks	52
Conservers & Regulators	52
LMI Products	53



Wheelchairs

Standard



STANDARD WHEELCHAIRS BY



Guardian Easy Care 2000
(Medicare code: K0001 / K0002)

Weight capacity for all: 250 lbs.

- GN-218RADPE 18" x 16" removable desk arm, elevating legrests
- GN-216RAFPS 16" x 16" removable full arms, swingaway footrests
- GN-216RADPS 16" x 16" removable desk arms, swingaway footrests
- GN-216RADPE 16" x 16" removable desk arms, elevating legrests
- GN-218RAFPS 18" x 16" removable full arms, swingaway footrests
- GN-218RADPS 18" x 16" removable desk arms, swingaway footrests



STANDARD WHEELCHAIRS BY



- IN-TREX28R 18" x 16" removable desk arms, dual axle heights, weight capacity: 250 lbs.
- IN-TREX26R 16" x 16" removable desk arms, weight capacity: 250 lbs.
- IN-TREX20R 20" x 16" removable desk arms, weight capacity: 300 lbs.



IN-T93HE

IN-T93HE
Tracer EX2 swingaway footrests
w/o heel loop



IN-T94HE

IN-T94HE
Tracer EX2 elevating legrests with
black plastic calf pad



Invacare Tracer EX2
(Medicare code: K0001 / K0002)
16" - 20" widths available



STANDARD WHEELCHAIRS BY GRAHAM-FIELD



Everest & Jennings Vista IC
Wheelchair (K0001 / K0002)

16" - 20" widths available
Weight capacity for all: 250 lbs.



- EJ-53010220 16" x 16" removable desk arm, swingaway footrests
- EJ-53010230 16" x 16" removable desk arm, elevating legrests
- EJ-53010160 18" x 16" adjustable desk arm, swingaway footrests
- EJ-53010170 18" x 16" adjustable desk arm, elevating legrests
- EJ-53010120 18" x 16" removable desk arm, swingaway footrests
- EJ-53010130 18" x 16" removable desk arm, elevating legrests



LIGHTWEIGHT WHEELCHAIRS BY



Guardian Easy Care 4000
(Medicare code: K0004)

- GN-416RADPS** 16" x 16" flip-back desk arm, dual axle heights, swingaway footrests, weight capacity: 250 lbs.
- GN-416RADPE** 16" x 16" flip-back desk arms, elevating legrests, weight capacity: 250 lbs.
- GN-418RADPS** 18" x 16" flip-back desk arms, swingaway footrests, weight capacity: 250 lbs.
- GN-418RADPE** 18" x 16" flip-back desk arms, elevating legrests, weight capacity: 250 lbs.
- GN-420RADPS** 20" x 16" flip-back desk arms, swingaway footrests, weight capacity: 300 lbs.
- GN-420RADPE** 20" x 16" flip-back desk arms, elevating legrests, weight capacity: 300 lbs.



LIGHTWEIGHT WHEELCHAIRS BY GRAHAM-FIELD



Everest & Jennings Metro IC3
(Medicare code: K0003)
Weight capacity: 250 lbs.

The **Metro IC3** is the answer for a wide variety of seating and ambulatory needs. With the over-link cross braces to allow easy mounting and removal of after-market backs, hight adjustable arms for better positioning, and dual position rear axles and caster forks, this lightweight manual wheelchair offers expanded applications to add a mix to anyone's product line. It simply fits!

- EJ-3D010220** 16" x 16" removable desk arm, swingaway footrests
- EJ-3D010230** 16" x 16" removable desk arm, elevating legrests
- EJ-3D010120** 18" x 16" removable desk arm, swingaway footrests
- EJ-3D010130** 18" x 16" removable desk arm, elevating legrests

The **Metro IC4** is the all around lightweight wheelchair to fit both your product line and your budget. With over-link cross braces, flip back arms, height adjustable back, and anti-tippers, this high strength lightweight is the chair of choice. A lightweight chair for a lightweight budget.

- EJ-3D020120** 18" x 16" removable desk arm, swingaway footrests
- EJ-3D020130** 18" x 16" removable desk arm, elevating legrests
- EJ-3D020220** 16" x 16" removable desk arm, swingaway footrests
- EJ-3D020230** 16" x 16" removable desk arm, elevating legrests
- EJ-3D020320** 20" x 16" removable desk arm, swingaway footrests
- EJ-3D020330** 20" x 16" removable desk arm, elevating legrests



Everest & Jennings Metro IC4
(Medicare code: K0004)
Weight capacity: 300 lbs.



LIGHTWEIGHT WHEELCHAIRS BY



Invacare Tracer SX5
(Medicare code: K0003)

IN-TRSX58FB 18" x 16" flip-back desk arms, dual axle heights, weight capacity: 250 lbs.

IN-TRSX56FB 16" x 16" flip-back desk arms, weight capacity: 250 lbs.

IN-TRSX50FB 20" x 16" flip-back desk arms, weight capacity: 300 lbs.

IN-TRSX5WD26 22" x 16" flip-back desk arms, weight capacity: 300 lbs.



Invacare 9000 SL
(Medicare code: K0004)

The **Invacare 9000 SL** is perhaps the best lightweight on the market for the price. The 9000 SL features include: high quality durable frames, dual axle positions, and flip back armrests just to name a few. This is the ideal choice for a lightweight (34 pounds) rental wheelchair or perhaps just a cash sale. Lake Court Medical Supplies stocks the 9000 SL in many different sizes and configurations.

IN-9SLWD66 16" x 16" 9000 SL, flip-back desk arms, weight capacity: 250 lbs.

IN-9SLWD86 18" x 16" flip-back desk arm

IN-9SLWD88 18" x 18" flip-back desk arm

IN-9SLWD06 20" x 16" flip-back desk arm

IN-9SLWD08 20" x 18" flip-back desk arm



Invacare 9000 XT
(Medicare code: K0004)

The **Invacare 9000 XT** is simply the most versatile and cost effective wheelchair on the market...period. It boasts an enormous selection of colors, sizes, frame styles, and accessories and weight under 32 pounds. The 9000 XT is simply the best and it meets all RESNA standards for product performance.

IN-9XTWD86 18" x 16" 9000 XT, flip-back desk arms, weight capacity: 250 lbs.

IN-9XTWD66 16" x 16" flip-back desk arms

IN-9XTWD66H 16" x 16" flip-back desk arms (Hemi)

IN-9XTWD86H 18" x 16" flip-back desk arms (Hemi)

IN-9XTWD06 20" x 16" flip-back desk arms



HEAVY DUTY WHEELCHAIRS BY



Guardian Easy Care 2000HD
(Medicare code: K0007)
20" - 24" widths available

GN-2HD22RADPS	22" x 18" removable desk arm, swingaway footrests, weight capacity: 450 lbs.
GN-220RADPS	20" x 16" removable desk arms, swingaway footrests, weight capacity: 300 lbs. (Medicare code: K0006)
GN-220RADPE	20" x 16" removable desk arms, elevating legrests, weight capacity: 300 lbs.
GN-2HD22RADPE	22" x 18" removable desk arms, elevating legrests, weight capacity: 300 lbs.
GN-2HD24RADPS	24" x 18" removable desk arms, swingaway footrests, weight capacity: 300 lbs.
GN-2HD24RADPE	24" x 18" removable desk arms, elevating legrests, weight capacity: 300 lbs.

We carry a wide variety of standard, lightweight and heavy duty wheelchairs. Please call for additional models and information.



HEAVY DUTY WHEELCHAIRS BY



Looking for a wheelchair that can hold up to 850 pounds? Gendron has chairs with weight capacities up to 850 pounds, widths up to 40", and turn around times of about a week!

G-5624-18-61-36	24" x 18" Regency XL Bariatric, removable arms, elevating legrests
G-5626-18-61-36	26" x 18" Regency XL Bariatric, removable arms, elevating legrests
G-5828-18-61-36	28" x 18" Regency XL Bariatric, removable arms, elevating legrests



Gendron Regency XL
Weight capacity: 600 lbs.



HEAVY DUTY WHEELCHAIRS BY



Tracer Compatible
Weight capacity: 400 lbs.

PMI-1013DX	22" x 18" Tracer compatible, desk arms, footrests
PMI-1014DX	22" x 18" Tracer compatible, desk arms, elevating legrests
PMI-1124DX	24" x 18" Tracer compatible, desk arms, footrests
PMI-1224DX	24" x 18" Tracer compatible, desk arms, elevating legrests



HEAVY DUTY WHEELCHAIRS BY



Invacare Tracer IV
(Medicare code: K0007)

IN-T420RDA	20" x 18" removable desk arm, weight capacity: 350 lbs.
IN-T422RDA	22" x 18" removable desk arm, weight capacity: 350 lbs.
IN-T4X22RDA	22" x 18" removable desk arm, weight capacity: 450 lbs.
IN-T424RDA	24" x 18" removable desk arm, weight capacity: 350 lbs.
IN-T4X24RDA	24" x 18" removable desk arm, weight capacity: 450 lbs.

IN-9XDTWD86 18" x 16"

IN-9XDTWD86T 18" x 16", Tall

IN-9XDTWD88T 18" x 18", Tall

IN-9XDTWD08 20" x 18"

All 9000 XDT wheelchairs feature flip-back desk arms and have a weight capacity of up to 350 lbs.



Invacare 9000 XDT
(Medicare code: K0007)

IN-T93HA Swingaway footrest for Tracer IV or 9000 XDT

IN-T94HA Elevating legrest for Tracer IV or 9000 XDT

IN-9TPZW28D20 28" x 20"

IN-9TPZW26D18 26" x 18"

IN-9TPZW28D18 28" x 18"

IN-9TPZW30D18 30" x 18"

IN-9TPZW30D20 30" x 20"

All Topaz IVC wheelchairs feature removable desk arms and have a weight capacity of up to 700 lbs.

Available widths - 20" - 30" & seat depths of 18" - 20"



Invacare Topaz IVC 9000
(Medicare code: K0007)

IN-TZ-33A Swingaway footrest w/ extra large footplate

IN-TZ-34A Elevating legrest w/ extra large footplate

TRANSPORT CHAIRS BY PROBASICS™ by PMI



PMI Heavy Duty Aluminum Transport Chair
Weight capacity: 300 lbs.

- PMI-9200 17" • Colors: Blue, Red, Green, Black or Silver
- PMI-9201 19" • Colors: Blue, Burgundy, Green, or Silver
- PMI-9300 21" • Colors: Blue, Red, Green, Black or Silver
- PMI-9400 19" • Colors: Burgundy or Black
- PMI-9500 22" • Colors: Burgundy or Black • Weight capacity: 400 lbs.
- PMI-9600 19" • Colors: Green Plaid or Grey Plaid

TRANSPORT CHAIRS BY GF



Graham Field Transport Chair
Weight capacity: 250 lbs.

- EJ-765-1 17" chrome transport chair with footrests
- EJ-766-1 19" chrome transport chair with footrests
- EJ-757-1 17" aluminum transport chair with footrests
- EJ-758-1 19" aluminum transport chair with footrests

RECLINING WHEELCHAIRS BY INVACARE



Invacare Tracer SX5 Recliner
(Medicare code: K0003 & K0028)

The **Invacare Tracer SX5 Recliner** offers durability of a standard wheelchair frame with the added versatility and comfort of a full reclining back with headrest. The Tracer SX5 recliner is available in a variety of sizes and styles and can be ordered to your exact needs. Call us today for more information.

- IN-TRSX5RC8 18" x 16" removable desk arm recliner, weight capacity: 250 lbs.
- IN-TRSX5RC6 16" Tracer SX5 reclining wheelchair
- IN-TRSX5RCWD06 20" Tracer S5X reclining wheelchair, weight capacity: 300 lbs. (Medicare code: K0006)



IN-T93HE

IN-T93HE
Tracer SX5 swingaway footrests w/o heel loop



IN-T94HE

IN-T94HE
Tracer SX5 elevating legrests with black plastic calf pad

Wheelchairs

Power Chairs



POWER CHAIRS BY



The Merits Travel-Ease Power chair features removable desk arms & foot-rests.



Merits Travel-Ease

- | | |
|-------------------|--|
| MHP-MP1A | 18" x 16", Travel-Ease, weight capacity: 250 lbs. |
| MHP-MP1N | 16" x 16", Travel-Ease, weight capacity: 250 lbs. |
| MHP-MP1W | 20" x 18", Travel-Ease, weight capacity: 300 lbs. |
| MHP-MP1X | 22" x 16", Travel-Ease, weight capacity: 350 lbs. |
| MHP-1518 | Elevating legrests for Travel-Ease |
| MHP-MP3RW | Heavy Duty RWD powerbase chair, oversized seat, weight capacity: 350 lbs., |
| MHP-MP3C | Compact RWD powerbase chair, 180 degree swivel seat, weight capacity: 300 lbs. |
| MHP-MP3CJR | Super light mini powerbase chair w/ contoured seat, weight capacity: 250 lbs. |



Merits MP3C Jr
Colors: Red or Blue



Merits MP3C
Colors: Red or Blue



POWER CHAIRS BY



Everest & Jennings
Metro Power III

- | | |
|--------------------|--|
| EJ-2F010220 | 16" x 16", Metro Power III, flip-back, desk arms, swingaway footrest |
| EJ-2F010230 | 16" x 16", Metro Power III, flip-back, desk arms, elevated legrest |
| EJ-2F010120 | 18" x 16", Metro Power III, flip-back, desk arms, swingaway footrest |
| EJ-2F010130 | 18" x 16", Metro Power III, flip-back, desk arms, elevated legrest |
| EJ-2F010320 | 20" x 16", Metro Power III, flip-back, desk arms, swingaway footrest |
| EJ-2F010330 | 20" x 16", Metro Power III, flip-back, desk arms, elevated legrest |

- | | |
|--------------------|---|
| EJ-2R000110 | 19" x 19", CRT 1000, RWD, weight capacity: 300 lbs., Color: Red |
| EJ-2R000111 | 19" x 19", CRT 1000, RWD, weight capacity: 300 lbs., Color: Blue |
| EJ-2R000112 | 19" x 19", CRT 1000, RWD, weight capacity: 300 lbs., Color: Black |



Everest CRT 1000



GT-GP600CP

Golden Technologies-Compass
19" turning radius, six wheels for great stability, available in blue, black or red, weight capacity: 300 lbs.



PMI-XP6500

ProBasics PMI-XP6500
18" x 16", folding power chair, 3 degree seat angle, weight capacity: 250 lbs.



Quickie S-11

Quickie S-11
18" x 18", Mid-wheel drive power chair, van-style seat, weight capacity: 300 lbs.




 SCOOTERS BY

 &





Pride GoGo Elite Traveller
PR-SC40E

Weight capacity 260 lbs.



Pride Sonic Scooter
PR-SC50

Weight capacity 300 lbs.



Pride Revo Scooter
PR-SC63

Weight capacity 300 lbs.



Pride Rally Scooter
PR-SC151

Weight capacity 300 lbs.



Pride Victory Scooter
PR-SC1600

Weight capacity 350 lbs.



Guardian Trek 3 or 4

Weight capacity 250 lbs.

3 or 4 wheeled models are available on most Pride and Guardian Scooters listed. Please contact us for current available colors.


 SCOOTERS BY





Buzzaround Lite
GT-GB106D-RSB

3 wheeled with multi-colored shrouds
Weight capacity 250 lbs.

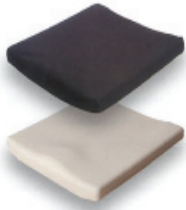


Liteway
GT-GL100

3 wheeled, red or blue
Weight capacity 300 lbs.



WHEELCHAIR CUSHIONS BY



Jay-Basic

The **Jay Basic** provides a soft and durable support for clients with mild postural needs who are at low risk for skin breakdown.

The **Jay Combi** Cushion and Lumbar Support offer pre-contoured supports to enhance postural stability for the client who requires mild to moderate postural support.



Jay-Combi



Jay-Triad

The **Jay Triad** is the perfect cushion for the price-sensitive client with moderate positioning needs. The three distinct but integrated layers of foam provide reduced sitting pressure as well as improved postural stability.

The **Jay Care** cushion is designed to promote optimal postural stability for the client with a fixed posterior pelvic tilt (sacral sitter) who uses sling upholstery. The integrated Jay Flow fluid pad provides pressure and shear reduction for the client who is at risk for breakdown.



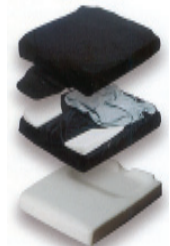
Jay-Care



Jay-Duo

The **Jay Duo** consists of three distinct but integrated parts, a solid seat pan, a foam cushion, and an integrated fluid pad. This system is ideal for clients requiring mild to moderate positioning who are at moderate risk for skin breakdown. The dropped seat pan allows the client to keep their feet on the ground for foot propulsion, transfers, or sitting.

The **Jay Xtreme** cushion is extremely lightweight, facilitating easy handling as well as efficient propulsion. The Extreme was designed for the active person who needs mild positioning and moderate to high skin protection without compromising functionality.



Jay-Xtreme



Jay-Active

The **Jay Active** cushion is lightweight and designed for the active client who requires mild to moderate positioning and moderate to high skin protection.

The **Jay J2** cushion is a lightweight, low maintenance product designed for the client at high risk of skin breakdown. The J2 is easily customized to accommodate specific client needs.

The **Jay J2 Plus** offers the bariatric client all of the clinical benefits of the J2 with a weight capacity of 650 pounds. Finally, a wheelchair cushion that can be customized to address the postural and skin protection need of the bariatric client.



Jay-J2



Jay-J2 Deep

The **Jay J2 Deep** Contour with a seat well 3" deep provides superior pressure and shear reduction for extremely high risk patients. Enhanced contours are designed to meet moderate positioning needs.

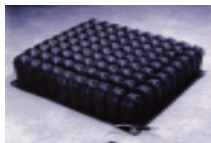
The **Jay GS** cushion design incorporates the technologies of the Jay Flow fluid, and includes growth capabilities to allow the cushion to grow as the client grows. The Jay GS is the ideal cushion for the pediatric or adult client with high positioning needs who is at moderate to high risk for skin breakdown.



Jay-GS

All Jay cushions shown above are available in widths of 14" - 20"
Also available, Jay wheelchair backs. Call us for details.

WHEELCHAIR CUSHIONS BY **CROWN**[®] THERAPEUTICS, INC.



ROHO Standard High Profile

RH-1R-99C 16" x 16" x 4" Standard high profile cushion
RH-1R-99LPC 16" x 16" x 2" Standard low profile cushion

RH-1R-109C 18" x 16" x 4" Standard high profile cushion
RH-1R-109LPC 18" x 16" x 2" Standard low profile cushion

RH-1R-119C 20" x 16" x 4" Standard high profile cushion
RH-1R-119LPC 20" x 16" x 2" Standard low profile cushion

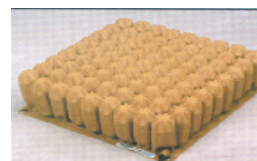
WHEELCHAIR CUSHIONS BY **STAR** Cushion Products, Inc.

ST-SC1515-1 16" x 16" x 4" Standard high profile cushion
ST-SCS1515-1 16" x 16" x 2" Standard low profile cushion

ST-SC1715-1 18" x 16" x 4" Standard high profile cushion
ST-SCS1715-1 18" x 16" x 2" Standard low profile cushion

ST-SC1717-1 18" x 18" x 4" Standard high profile cushion
ST-SCS1717-1 18" x 18" x 2" Standard low profile cushion

ST-SC1915-1 20" x 16" x 4" Standard high profile cushion
ST-SCS1915-1 20" x 16" x 2" Standard low profile cushion



Star Standard High Profile

We carry a wide variety of Star and ROHO Wheelchair cushions. Please call us for additional information.

GEL & FOAM CUSHIONS

MX-FOAM16162 16" x 16" x 2" foam cushion
MX-FOAM18162 18" x 16" x 2" foam cushion
MX-FOAM20162 20" x 16" x 2" foam cushion
MX-FOAM22183 22" X 18" X 3" foam cushion
MX-FOAM28204 28" x 20" x 4" foam cushion



MX-GEL16163 16" x 16" x 3" Gel-Eeze gel-foam
MX-GEL20182 20" x 18" x 2" Gel-Eeze gel-foam
MX-GEL22182 22" x 18" x 2" Gel-Eeze gel-foam
MX-GEL24163 24" X 16" X 3" Gel-Eeze gel-foam
MX-GEL26163 26" x 16" x 3" Gel-Eeze gel-foam

SA-SWAVE-04 18" x 16" Shortwave seat/back



Other sizes are available. Call us for pricing and availability on cushions not listed.



WHEELCHAIR ACCESSORIES



- DM-1753 8" x 24" without cut-outs
- DM-1754 8" x 30" wood transfer board without cut-outs
- DM-1756 8" x 30" wood transfer board with two cut-outs
- DM-1759 8" x 24" wood transfer board with one cut-out
- DM-1760 8" x 30" wood transfer board with one cut-out
- DM-1761 8" x 27 1/2" plastic transfer board



Solid Wood Transfer Boards
Weight capacity: 250 lbs.

We carry a wide variety of accessories that are in stock and ready to ship for all makes and models of wheelchairs. Please contact us for more information and products.



Brake extensions

- DM-4042 Standard wood wheelchair tray, 24" x 20"
- AF-622051 8" brake extensions
- AF-511110 48" auto-style seat belt
- PMI-016 Universal O2 holder for wheelchairs
- PMI-017 Universal O2 / IV Pole attachment
- IN-1497 O2 holder for Invacare lightweight wheelchairs
- IN-1360 Tippers for Invacare lightweight wheelchairs



Wheelchair Trays



Portable Ramps
Weight capacity: 600 lbs.

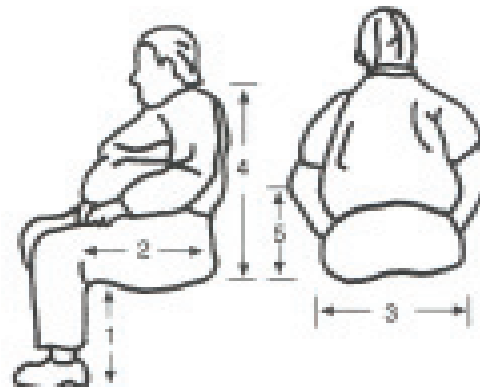
- IN-ICR330 Folding wheelchair ramp, 3' - 1" x 30"
- IN-ICR630 Folding wheelchair ramp, 6' - 1" x 30"

Every manual and power wheelchair should fit the customer properly. Please feel free to use this chart as a guide. Proper fit will provide more comfort and lead to much more happy customers!

1. Seat distance from the floor (Seat height)
 2. Depth of seat from front to rear (Seat depth)
 3. Overall width of seat (Seat width)
 4. Seat to top of back (Backrest height)
 5. Seat to top of armrest (Armrest height)
- Back angle (degrees)

If the seat plane is not parallel to the floor, indicate the distance from the front and rear of the seat to floor

- * Front edge of seat to floor
- * Back edge of seat to floor



WALKERS BY

- GN-30755-P** Adult double button walker, height 5'-4" to 6'-2"
- GN-30760-P** Adult single button walker, height 5'-1" to 6'-2"
300 lbs. weight capacity, 4/case

- GN-30753-B** Adult bariatric double button walker, product height 32" - 39"
500 lbs. weight capacity, 2/case
- GN-30754-B** Adult bariatric folding walker Plus, product height 32" - 39"
650 lbs. weight capacity

- GN-30756-P** Junior double button walker, height 4'-7" to 5'-3"
- GN-30761-P** Single button walker junior, height 4'-3" to 5'-2"
300 lbs. weight capacity, 4/case

- GN-07855** Palm-release folding walker, 300 lbs. weight capacity
- GN-07822** 5" fixed wheels for model GN-07855

- GN-7767** Heavy duty wide walker, approx. patient height 5'-4" to 6'-2"
400 lbs. weight capacity, 2/case

- GN-7749** Pediatric folding walker, Child, approx. patient height 4'-0" to 4'-8"
200 lbs. weight capacity, 1/case

- GN-7750** Pediatric folding walker, Toddler, approx. patient height 3'-4" to 4'-0"
175 lbs. weight capacity, 1/case



Adult Walkers



Pediatric Walkers



Adult Bariatric Walkers



Palm-Release Folding Walkers

WALKER ACCESSORIES BY



Walker basket



Platform attachment



Glide caps



5" Fixed wheels



3" Fixed wheels



Swivel wheels



Glide brakes



Wheeled glide brakes



Flip trays

- GN-7702** Platform attachment
- GN-7712** 4" Leg extension, 4/package
- GN-7715** Walker basket, 2/case
- GN-7722-5** 5" Fixed wheels (5 hole adjustments)
- GN-7722-8** 5" Fixed wheels (8 hole adjustments)
- GN-7722-8B** 5" Fixed wheels for bariatric walker
- GN-7725** 5" Fixed wheels w/ long extensions
- GN-7729** 3" Fixed wheels for pediatric walkers
- GN-7731** 3" Fixed wheels
- GN-7732** Glide brakes
- GN-7820** 3" Swivel wheels w/ rear glide brakes
- GN-7832** Wheeled glide brakes
- GN-7811** 5" Swivel wheels
- GN-7850** Flip tray for walkers, 3/case
- GN-7904** Glide caps, 4/package

We carry a wide variety of additional Guardian accessories. Please contact us for more information.

Call to order: (248) 763-4737

Ambulatory Aids

Walkers



WALKERS & ACCESSORIES BY



Adult, Junior and Heavy Duty Walkers



Heavy Duty Walkers



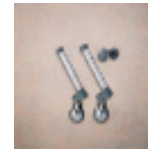
Hemi Walkers

- IN-6252** Hemi walker, approx. patient height 5'1" - 5'10", 250 weight capacity, 2/case
- IN-6291-A** Adult dual release walker, approx. patient height 5'3" to 6'4" 300 lbs. weight capacity, 4/case
- IN-6291-HDA** Heavy duty dual release wide walker, approx. patient height 5'3" to 6'4" 400 lbs. weight capacity, 2/case
- IN-6291-JR** Junior dual release walker, approx. patient height 4'7" to 5'7" 300 lbs. weight capacity, 4/case
- IN-6441-A** Heavy Duty Walker, approx. patient height 5'3" to 6'10", 700 lbs weight capacity, 2/case

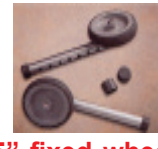
- IN-6007** Walker tray
- IN-6027** Platform walker attachment
- IN-6098** Walker basket
- IN-6264** 10" Rear wheel brakes
- IN-6267** 5" Swivel wheels w/ rear glide caps
- IN-6270** 3" Fixed wheels w/ rear glide caps
- IN-6271** 5" Fixed wheels w/ rear glide caps
- IN-6273** 3" Swivel wheels w/ rear glide caps
- IN-6275** Tall leg extensions, increases walker to 6'-6"
- IN-6278** Tall 3" fixed wheel, increases walker to 6'-6"
- IN-6280** Glide tips, 24/case
- IN-6290** Court-side gliders



Walker trays



3" swivel wheel



5" fixed wheel



Walker attachment



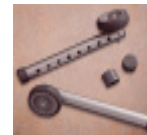
Glide tips



Leg extensions



Walker basket



3" fixed wheel



5" swivel wheel



We also stock specialty pediatric walkers like the Guardian Strider and Tyke walkers.

Contact us for pricing.



Extensions w/ wheels



Court-side gliders

We carry a wide variety of additional Invacare accessories. Please contact us for more information.

WALKERS & ACCESSORIES BY caring for you



Adult single button walker



Adult extra wide walker



Adult walker with 5" wheels



Adult sidestepper walker

- CX-A857** Adult Single button walker
Adjustment height 30" to 37"
- CX-A846** Junior dual paddle walker
Adjustment height 26" to 33"
- CX-A847** Adult dual paddle walker
Adjustment height 30" to 37"
- CX-A848** Adult dual paddle extra wide walker
Adjustment height 30" to 37"
400 lbs. weight capacity, 2/case
- CX-A856** Junior single button walker
Adjustment height 26" to 33"
- CX-A857-90** Adult single button walker w/ 5" wheels
Adjustment height 30" to 37"
- CX-A873** Adult sidestepper walker
Approx. patient height 30" to 34"

All Carex walkers have a weight capacity of 300 lbs. and are shipped 2 per case unless noted.

- CX-A800** Platform walker attachment
- CX-A825** Velcro walker basket
- CX-A830** Snap-on walker basket
- CX-A831** Auto glide (plunger)
- CX-A832/833** 3" or 5" Swivel wheels
- CX-A834** Wheel glides (auto-stop)
- CX-A835/836** Rear glides (1" / 1 1/8")
- CX-A837/839** 3" or 5" Fixed wheels
- CX-A878** Tall leg extensions



Walker attachment



Fixed wheels



Swivel wheels



Wheel glides



Velcro basket



Snap-on basket



Leg extensions



Glides

WALKERS BY



Dual release walker

- LX-716070A** Adult dual release walker,
height adjustment 32 1/4" - 39 1/4",
- LX-716170A** Junior dual release walker,
height adjustment 25 1/2" - 34 1/4",
- LX-716270A-4** Adult dual release walker w/ 5" wheels
height adjustment 32 1/4" - 39 1/4"
- LX-716370A-4** Junior dual release walker w/ 5" wheels
height adjustment 27 1/2" - 34 1/4"



Dual release walker with 5" wheels

All Lumex walkers have a weight capacity of 300 lbs. and are shipped 4 per case.

Ambulatory Aids

Walkers

WALKERS & ACCESSORIES BY



Stroke walker



Stair climber

TF-2112 Universal stroke walker
Handle height 25.5" to 35.5"
300 lbs. weight capacity, 1/case

TF-2113 Stair climbing walker
Handle height 25.5" to 35.5"
200 lbs. weight capacity, 1/case

TF-2137 Tall walker
16 1/2" between the handles
Handle height 31" to 41"
500 lbs. weight capacity

TF-2138 Heavy duty walker
20 1/2" between the handles
Handle height 30" to 40"
500 lbs. weight capacity

TF-2151 Heavy duty wide walker with dual 5"
front wheels and wheeled glide brakes
500 lbs. weight capacity

TF-2153 Extra heavy duty wide walker
650 lbs. weight capacity

TF-2600 Deluxe side walker / cane
Handle height 32.5" to 36.5"
300 lbs. weight capacity, 2/case

TF-2106 TF-2600 leg extensions
adds 5" of height



Heavy duty



Side walker



TF-2140BXL Heavy duty glide brakes

TF-2148BXL Heavy duty dual 5" wheels

TF-2152 Heavy duty dual 5" swivels
w/ rear brakes

ROLLING WALKERS BY



Envoy 480HD



Envoy 460



Envoy 480



Envoy 680

GN-7890TB Envoy 480HD 4-wheeled Heavy Duty
Titanium Bariatric Rollator w/ 8" wheels,
height adjustment 5'2" - 5'11",
weight capacity 500 lbs.

GN-7889T Envoy 480HD 4-wheeled Heavy Duty
Titanium Rollator w/ 8" wheels, height
adjustment 5'2" - 5'11",
weight capacity 375 lbs.

GN-07886 Envoy 460 4-wheeled Economy Rollator
Lightweight 15.5 lbs aluminum frame w/
6" wheels, weight capacity 275 lbs.
available colors: Blue, Red or Green

GN-07887 Envoy 480 4-wheeled Rollator
weight capacity 275 lbs., available
colors: Blue or Rose

GN-7888G Envoy 680 6-wheeled Rollator with 8"
wheels, weight capacity 275 lbs.,
available colors: Green only

ROLLING WALKERS BY NOVA

- NV-4200 "Cruiser" 4-Wheeled Rollator w/ basket and weight activated brakes
Handle: 31.5" to 36", weight capacity: 225 lbs., available colors: Blue or Red
- NV-4200C "Cruiser Classic" 4-wheeled rollator with basket and weight activated brakes
Handle: 32" to 36.5", weight capacity: 225 lbs., available colors: Blue or Red
- NV-4202 "Cruiser Deluxe" 4-wheeled rollator w/ basket and locking loop brakes
Handle: 32.5" to 36.5", weight capacity: 275 lbs.
Available colors: Blue, Red, Green, Purple, or Black
- NV-4202C "Cruiser Deluxe Classic" 4-wheeled rollator with basket and locking loop brakes
Handle: 33" to 37", weight capacity: 250 lbs., available colors: Blue or Red
- NV-4207 "Cruiser Deluxe Junior" 4-wheeled rollator with basket and locking loop brakes
Handle: 30.5" to 34.5", weight capacity: 275 lbs., available colors: Blue, Red or Purple
- NV-4212 "Cruiser Deluxe Super" 4-wheeled rollator w/ basket and locking loop brakes
Handle: 34" to 38.5", weight capacity: 250 lbs., available colors: Blue or Red
- NV-4214 "Mini Mack" 4-wheeled rollator with basket and locking loop brakes
Handle: 30" to 34.5", weight capacity: 325 lbs., available colors: Blue or Red
- NV-4215 "The Mack" with basket and locking loop brakes
Handle: 34.5" to 39", weight capacity: 325 lbs., available colors: Blue or Red
- NV-4216 "Might Mack" Heavy duty 4-wheeled rollator, 8" rear wheels and locking loop brakes
Handle: 30.5" to 36.5", weight capacity: 600 lbs., available colors: Blue or Red
- NV-4900 "Traveler II" 3-wheeled rollator with basket, bag, and tray
Handle: 33" to 36.5", weight capacity: 250 lbs., available colors: Blue, Red or Black
- NV-4010 "De-Light" 4-wheeled rollator with locking loop brake, seat and basket
Handle: 34 1/4" to 38 1/4", weight capacity: 250 lbs., available colors: Blue or Red
- NV-TLC-6 "Turning Leg Caddy" foldable knee scooter w/ brake
Patient height: 4'11" to 5'8", weight capacity: 350 lbs.
- NV-TLC-9 "Turning Leg Caddy" foldable knee scooter w/ brake
Patient height: 5'9" to 6'6", weight capacity: 350 lbs.



Cruiser



Cruiser Classic



Cruiser Deluxe



De-Light



Cruiser Deluxe Super



Turning Leg Caddy



The Mack



Cruiser Deluxe Classic



Mighty Mack



Traveler II

Ambulatory Aids

Rolling Walkers



ROLLING WALKERS BY



IN-6300-JRA Junior-Adult WalkLite Rollator, rear SureGlide brakes, 5" front wheels, patient height 4'11" - 6'0"

IN-6300-ATA Adult-Tall WalkLite Rollator rear SureGlide brakes, 5" front wheels, patient height 5'5" - 6'5"

IN-65100 Rollite flat folding walker adjustment height 32" - 36" depth: open: 24", folded: 7" color: midnight blue

IN-65100B-JR Rollite flat junior folding walker adjustment height 29" - 33" depth: open: 24", folded: 7" color: midnight blue

IN-65100R Rollite flat folding walker adjustment height 32" - 36" depth: open: 24", folded: 7" color: red

IN-65100R-JR Rollite flat junior folding walker adjustment height 29" - 33" depth: open: 24", folded: 7" color: red

IN-66500 Heavy duty bariatric rollator adjustment height 5'8" - 6'5" 500 lbs. weight capacity



WalkLite Rollator



Rollite Rollator



Bariatric Rollator



Basket for Rollite

IN-65109

Basket for junior Rollite

IN-65110

Basket for adult Rollite

All Invacare walkers have a weight capacity of 300 lbs. unless noted.



ROLLING WALKERS BY



Walkabout
300 lbs. weight capacity

LX-RJ4300 Walkabout Lite adult rollator adjustment height 34.5" - 38.5" colors: red, blue, green

LX-RJ4301 Walkabout Lite junior rollator adjustment height 27.5" - 32" colors: red or blue

LX-RJ4302 Walkabout Hemi adjustment height 28" - 33" colors: red, blue or black

LX-RJ4400K Bariatric 4-wheeled rollator adjustment height 35" - 39.5" 500 lbs. weight capacity colors: black

LX-609101A Sure-Gait II chrome rollator adjustment height 32" - 37.5"



Sure-Gait II

CRUTCHES BY 



Quick-adjust crutch

- IN-8120-A** Adult quick-adjust crutch, adjustment height 5'-2" to 5'-10" weight capacity 250 lbs., 8/case
- IN-8120-J** Junior quick-adjust crutch, adjustment height 4'-6" to 5'-2" weight capacity 250 lbs., 8/case
- IN-8120-T** Tall-Adult quick-adjust crutch, adjustment height 5'-10" to 6'-6" weight capacity 250 lbs., 8/case
- IN-8130-A** Adult bariatric crutch, adjustment height 5'-2" to 5'-10" weight capacity 550 lbs., 1/case
- IN-8130-J** Junior bariatric crutch, adjustment height 4'-6" to 5'-2" weight capacity 550 lbs., 1/case
- IN-8130-T** Tall-Adult bariatric crutch, adjustment height 5'-10" to 6'-6" weight capacity 550 lbs., 1/case



Invacare bariatric crutch

CRUTCHES BY 



- LX-3610M** Adult crutch, patient height 5'2" - 5'10" weight capacity 300 lbs., 8/case
- LX-3611M** Adult-tall crutch, patient height 5'-10" to 6'-6" weight capacity 300 lbs., 8/case
- LX-3612M** Youth crutch, patient height 4'-6" to 5'-2" weight capacity 300 lbs., 8/case



CRUTCHES BY  CRUTCHES BY 

- TF-2633** Adult heavy duty crutch, adjustment height 44" - 52"
- TF-2634** Adult-tall heavy duty crutch, adjustment height 52" to 60"
- TF-2635** Extra tall heavy duty crutch, adjustment height 60" to 68"



TFI crutches have a weight capacity of 500 lbs. and are shipped 1 per case.

TFI Crutches



- CX-A418-00** Adult-tall heavy duty
- CX-A419-00** Adult heavy duty
- CX-A420-00** Youth heavy duty

Carex crutches have a weight capacity of 500 lbs. and are shipped 2 per case.

Ambulatory Aids

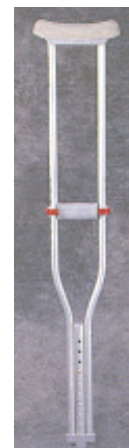
Crutches



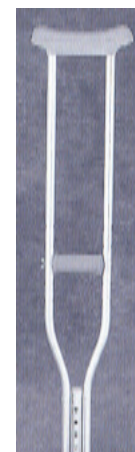
CRUTCHES BY



- GN-90-214** Red-dot tall adult crutch, adjustment height 5'-10" to 6'-6"
weight capacity 300 lbs., 8/case
- GN-91-214** Red-dot adult crutch, adjustment height 5'-2" to 5'-10"
weight capacity 300 lbs., 8/case
- GN-92-214** Red-dot youth crutch, adjustment height 4'-6" to 5'-2"
weight capacity 300 lbs., 8/case
- GN-50-514** Quick-fit tall adult crutch, adjustment height 5'-10" to 6'-6"
weight capacity 300 lbs., 8/case
- GN-51-514** Quick-fit adult crutch, adjustment height 5'-1" to 5'-9"
weight capacity 300 lbs., 8/case
- GN-52-514** Quick-fit tall adult crutch, adjustment height 4'-6" to 5'-2"
weight capacity 300 lbs., 8/case
- GN-53-314** Quick-fit child crutch, adjustment height 4'-0" to 4'-6"
weight capacity 200 lbs., 8/case
- GN-60-314B** Adult-tall heavy duty crutch, adjustment height 5'-10" to 6'-6"
weight capacity 500 lbs., 8/case
- GN-61-314B** Adult heavy duty crutch, adjustment height 5'-2" to 5'-10"
weight capacity 500 lbs., 8/case



**Red-dot
crutch**



**Quick-fit
crutch**



**Tyke forearm
crutch**



**Adult forearm
crutch**

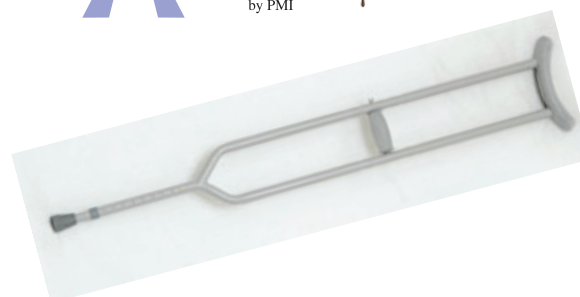
- GN-5160** Tall adult silver forearm crutch, adjustable height 5'-10" to 6'-6"
weight capacity 300 lbs., 1/case
- GN-5161** Adult silver forearm crutch, adjustable height 5'-2" to 5'-10"
weight capacity 300 lbs., 1/case
- GN-5162** Youth silver forearm crutch, adjustable height 4'-2" to 5'-2"
weight capacity 300 lbs., 1/case
- GN-5163** Child silver forearm crutch, adjustable height 3'-2" to 4'-6"
weight capacity 200 lbs., 1/case
- GN-5144X** Toddler forearm crutch, adjustable height 2'-10" - 4'-4"
weight capacity 175 lbs., 1/case
- GN-5144** Tyke forearm crutch, adjustable height 2'-0" to 3'-0"
weight capacity 150 lbs., 1/case



CRUTCHES BY



- PMI-1155A** Adult bariatric steel crutch,
weight capacity 500 lbs., 1/case
- PMI-1155T** Adult-tall bariatric steel crutch
weight capacity 500 lbs., 1/case





CANES & QUAD CANES BY



- GN-30340** Adult large base quad cane, handle height 29" - 38"
weight capacity 250 lbs., 2/case
- GN-30345** Adult small base quad cane, handle height 29" - 38"
weight capacity 250 lbs., 2/case
- GN-5340S** Adult large base quad cane, satin finish, handle height 29" - 38"
weight capacity 300 lbs., 2/case
- GN-5345S** Adult small base quad cane, satin finish, handle height 4'10" - 6'4"
weight capacity 300 lbs., 2/case
- GN-5846S** Youth small base quad cane, handle height 4'0" - 5'5"
weight capacity 300 lbs., 2/case
- GN-5355** Uni-poise adjustable cane, brite, weight capacity 300 lbs., 6/case
- GN-5356** Uni-poise adjustable cane, black, weight capacity 300 lbs., 6/case
- GN-5370** Standard adjustable cane, candy cane style, weight capacity 300 lbs., 6/case



Uni-poise & Standard



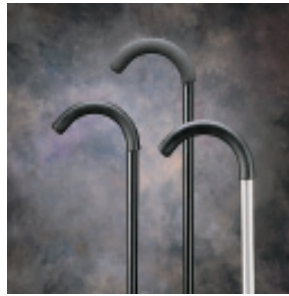
Quad canes



CANES & QUAD CANES BY



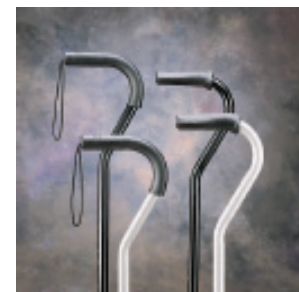
Quad canes



Crook canes

- IN-3920-2** Medium base quad cane, Invacare grip
handle height 26.5" - 36", 2/case
- IN-7823** Medium base quad cane, dual-cam grip
handle height 26.5" - 36.5", 2/case
- IN-7827** Large base quad cane, Invacare grip
handle height 27" - 37", 2/case
- IN-7829** Large base quad cane, dual-cam grip
handle height 26.5" - 36.5", 2/case
- IN-7831-2** Bariatric small base quad cane
handle height 29.5" - 38", 2/case
weight capacity 700 lbs.
- IN-7835-2** Bariatric large base quad cane
handle height 29.5" - 38", 2/case
weight capacity 700 lbs.
- IN-40915-6** Silver crook cane, Invacare grip
handle height 30" - 39"
- IN-40918-6** Black offset cane, Invacare grip
handle height 29" - 38"
- IN-8916** Black crook cane, Invacare grip
handle height 30" - 39"
- IN-8917** Silver offset cane, Invacare grip
handle height 29" - 38"
- IN-8931** Silver offset cane, dual-cam grip
handle height 29" - 38"
- IN-8932** Black offset cane, dual-cam grip
handle height 29" - 39", 6/case

*All Invacare canes listed
feature a weight capacity
of 250 lbs. unless noted*



Offset canes

Ambulatory Aids

Canes & Quad Canes



CANES & QUAD CANES BY



Folding seat cane

- | | |
|----------------|--|
| CX-A616 | Small base quad cane with Explorer handle
handle height 28.5" - 37.5", 2/case |
| CX-A617 | Large base quad cane with Explorer handle
handle height 28.5" - 37.5", 2/case |
| CX-A740 | Large base quad cane with offset handle
handle height 28" - 37", 2/case |
| CX-A758 | Small base quad cane with offset handle
handle height 28" - 37", 2/case |
| CX-A757 | Folding seat cane, 1/case |



Offset quad cane

Explorer handle quad cane



All Carex canes listed feature a weight capacity of 250 lbs.

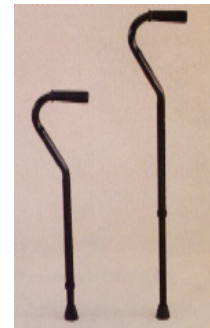


CANES & QUAD CANES BY



Heavy duty quad cane

- | | |
|-----------------|--|
| TF-2618B | Heavy duty adjustable offset cane
handle height 31" - 40", 1/case |
| TF-2619B | Extra heavy duty adjustable offset cane
handle height 37" - 46", 1/case |
| TF-2654 | Heavy duty small base quad cane
handle height 28.5" - 38.5", 1/case |
| TF-2659 | Heavy duty large base quad cane
handle height 28.5" - 38.5", 1/case |



Heavy duty offset cane

All TFI canes listed feature a weight capacity of 500 lbs.

- | | |
|----------------|--|
| TF-Wood | Wood canes, standard and extra long
Colors: Black, Walnut, and Mahogany finish
Many handle styles available, please call |
|----------------|--|



CANES & QUAD CANES BY



Large Base Quad Cane

- | | |
|-----------------|--|
| GN-30340 | Large base quad cane - chrome
handle height 29.5" - 38.5", 2/case |
| GN-30341 | Large base quad cane - black
handle height 29.5" - 38.5", 2/case |
| GN-30370 | "Easy Care" curved cane - silver
handle height 30" - 39", 6/case |
| GN-30371 | "Easy Care" curved cane - black
handle height 30" - 39", 6/case |
| GN-30372 | "Easy Care" curved cane - bronze
handle height 30" - 39", 6/case |
| GN-5555 | Offset cane with SureGrip
handle height 30" - 39", 6/case |

"Easy Care" curved cane



Offset cane w/ SureGrip

All Guardian canes listed feature a weight capacity of 250 lbs.

CANES & QUAD CANES BY NOVA

NV-2000 Flower pot display with 13 canes includes the following:



Flower pot display

- NV-2000CR** Flower pot cane rack - Qty: 1
- NV-2011** Purple & pink flowers - Qty: 1
- NV-2014** Lilacs & green leaves - Qty: 2
- NV-2017** Maui flowers - Qty: 2
- NV-2018** Burberry green - Qty: 2
- NV-2024** Snake skin - Qty: 2
- NV-2025** Blue & pink flowers - Qty: 2
- NV-2030** Purple checkers - Qty: 2



We carry a wide variety of Nova canes in designer styles and patterns. All designer Nova canes shown above may also be purchased individually.



Quad canes

- NV-1060BK** Black offset cane with wrist strap
- NV-1060BZ** Bronze offset cane with wrist strap
- NV-1060S** Silver offset cane with wrist strap
- NV-5610** Black large base quad cane
- NV-5610SI** Silver large base quad cane
- NV-5620** Black small base quad cane
- NV-5620SI** Silver small base quad cane

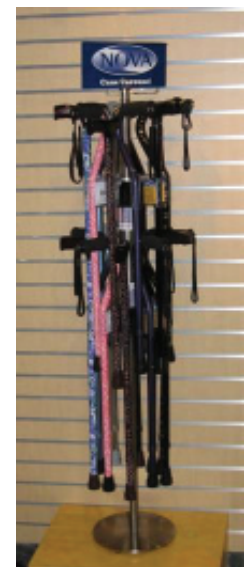
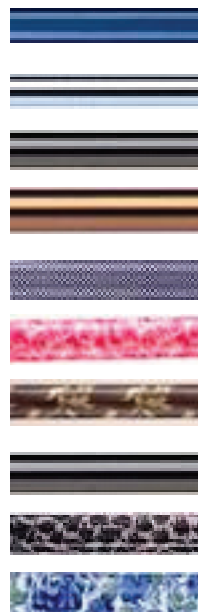
All Nova canes listed feature a weight capacity of 250 lbs. and can be adjusted from 30" - 39"



Offset canes

NV-1001CC Cane Carousel display includes cane carousel rack and 20 adjustable aluminum canes. This package includes two of each cane listed below:

- NV-C1060BL** Offset cane / Blue
- NV-C1060SI** Offset cane / Silver
- NV-C1060BK** Offset cane / Black
- NV-C1060BR** Offset cane / Bronze
- NV-C1070PC** Offset cane / Purple Checkers
- NV-C1070RS** Offset cane / Pink Roses
- NV-C1070CF** Offset cane / Camouflage
- NV-C2050BK** T-Handle / Black
- NV-C2028** T-Handle / Leopard
- NV-C2014** T-Handle / Lilacs leaves



Cane Carousel



TRANSFER BENCHES BY



- GN-98013A** Padded transfer bench w/ commode opening and suction cups adjustment height 17" - 22", weight capacity 300 lbs., 1/case
- GN-98308A** Blow molded transfer bench adjustment height 15.5" - 20.5", weight capacity 300 lbs., 2/case
- GN-98309** Economy blow molded transfer bench adjustment height 17" - 22", weight capacity 300 lbs., 1/case
- GN-98310B** Texture molded transfer bench w/ suction cups adjustment height 17" - 22", weight capacity 500 lbs., 2/case
- GN-98338A** Padded transfer bench w/ suction cups adjustment height 16" - 21", weight capacity 300 lbs., 1/case
- GN-98340** Suction cups for 98308A & 98338A, 1 pair/case
- GN-98040** Suction cups for 98013, 1 pair/case



Transfer bench with commode



Economy molded



Blow molded



Texture molded



Padded bench



TRANSFER BENCHES BY



- LX-7955A** Padded transfer bench w/ two suction cups adjustment height 17" - 22", weight capacity 300 lbs., 2/case
- LX-7927A** Maxi-drain blow molded transfer bench w/ two suction cups adjustment height 18" - 22", weight capacity 250 lbs., 2/case
- LX-7929A** Imperial collection blow molded transfer bench w/ two suction cups adjustment height 19" - 23", weight capacity 400 lbs., 2/case



Padded bench



Maxi-drain



Imperial Collection

TRANSFER BENCHES BY   

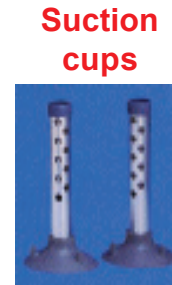
- CX-B150** Padded transfer bench, Adjustment height 18" to 22", weight capacity 300 lbs., 1/case
- CX-B152** Padded tranfer bench w/ commode opening, adjustment height 18" to 22", weight capacity 300 lbs., 1/case
- CX-B154** Blow molded bench, adjustment height 17" to 21", weight capacity 300 lbs., 1/case
- CX-B156** Blow molded bench w/ commode opening, adjustment height 17" to 21", weight capacity 300 lbs., 1/case
- CX-B158** Composite transfer bench, adjustment height 18.5" to 23.5", weight capacity 350 lbs., 3/case
- CX-B157** Suction cups for Carex transfer benches, 6 pair/case
- CX-B161** Transfer bench extension legs, adds 6" in height, 6 pair/case



Padded bench



Composite bench



Leg Extensions

 **MORE TRANSFER BENCHES**  

- PMI-415** ProBasics padded transfer bench, adjustment height 16" - 21", weight capacity 315 lbs.
- PMI-417** ProBasics plastic transfer bench, adjustment height 16" - 21", weight capacity 315 lbs.
- TFI-4379** TFI heavy duty transfer bench, seat size 16" x 27", weight capacity 500 lbs.
- NV-9070** Nova deluxe plastic transfer bench, adjustment from 14" - 21", weight capacity 300 lbs.
- NV-9080** Nova deluxe padded transfer bench, adjustment from 14" - 21", weight capacity 300 lbs.
- NV-9200** Nova bath board with red safety handle, adjusts from 17 3/4" - 28", weight capacity 250 lbs.
- IN-9670** Invacare heavy duty plastic transfer bench, adjusts from 18" - 23", weight capacity 400 lbs.
- IN-9871** Invacare padded transfer bench, adjusts from 17.5" - 22", weight capacity 300 lbs.



ProBasics padded



TFI heavy duty



Nova deluxe



Nova bath board



Invacare heavy duty



Invacare padded



BATH SEATS



GN-30400

Guardian bath seat with back, adjustment height 13" - 20"

GN-30401

Guardian bath seat without back, adjustment height 13" - 20"

Guardian bath seat

IN-1362 Hygienic bath seat without back, adjustment height 14.5" - 21.5"

IN-1363 Hygienic bath seat with back, adjustment height 14.5" - 21.5"

IN-9664 I-Class bath board

IN-9780 I-Fit bath seat without back, adjustment height 14.75" - 21.75"

IN-9781 I-Fit bath seat with back, adjustment height 14.75" - 21.75"

IN-9872 Padded bath seat with back, adjustment height 17.5" - 22"

IN-9980 Folding bath seat without back, seat height 17.5"

IN-9981 Folding bath seat with back, seat height 17.5"



All Guardian and Invacare bath seats listed above have a weight capacity of 250 lbs. and are shipped 2 units per case.



Nova bath seats

NV-9010 Bath seat without back
Adjusts from 14" - 20"

NV-9020 Bath seat with back
Adjusts from 14" - 20"

NV-9100 Bath seat with red safety handle with back
Adjusts from 15" - 21"

NV-9120 Bath seat with red safety handle without back
Adjusts from 15" - 21"



PMI-102 Adjustable bath seat with back
Adjusts from 14" - 20"

PMI-202 Adjustable bath seat without back
Adjusts from 14" - 20"



ProBasics bath seats

All ProBasics and Nova bath seats listed above have a weight capacity of 300 lbs.



Folding bath seat without back



Bath seat without back

BATH SEATS BY TFI

- TF-4312** Heavy duty bath seat with back adjustment height 16.5" - 20.5", weight capacity 500 lbs., 1/case
- TF-4328** Bath seat without back adjustment height 14" - 18", weight capacity 500 lbs., 1/case
- TF-4322AR** Folding bath seat without back Height 15.5", weight capacity 300 lbs., 1/case



Heavy duty bath seat with back

BATH SEATS BY Carex caring for you

- CX-B600** Adjustable round shower stool, adjustment height 15.5" - 20.5", weight capacity 250 lbs., 2/case
- CX-B652** Bath seat with back, adjustment height 15.5" - 22.5", weight capacity 300 lbs., 2/case
- CX-B653** Bath seat without back, adjustment height 15.5" - 22.5", weight capacity 300 lbs., 2/case
- CX-B655** Composite bath seat without back, adjustment height 18.5" - 23.5", weight capacity 300 lbs., 3/case
- CX-B656** Composite Bath Seat with Back, adjustment height 18.5" - 23.5", weight capacity 300 lbs., 3/case
- CX-B670** Universal bath seat without back, adjustment height 18" - 23", weight capacity 300 lbs., 3/case
- CX-B671** Universal bath seat with back, adjustment height 18" to 23", weight capacity 300 lbs., 3/case



Round shower stool

Bath seat with back



Composite bath seat with back

Universal bath seat with back



BATH SEATS BY LUMEX

- LX-7921A** Platinum collection bath seal with back adjustment height 15" - 22", weight capacity 250 lbs., 2/case
- LX-7931A** Platinum collection bath seal without back adjustment height 15" - 22", weight capacity 250 lbs., 4/case
- LX-7932A** Bariatric bath seat without back adjustment height 14" - 17", weight capacity 600 lbs., 2/case
- LX-7939A** Bariatric bath seat with back adjustment height 14" - 17", weight capacity 600 lbs., 2/case



Platinum collection bath seats



COMMODOES BY



GN-30210 Standard 3 in 1 commode
adjustment height 18" - 22"
weight capacity 250 lbs., 2/case



Standard 3 in 1

GN-30213 Standard 3 in 1 commode, painted
adjustment height 18" - 22"
weight capacity 350 lbs., 2/case



Deluxe padded drop arm

GN-30214 Heavy duty commode
adjustment height 18" - 22"
weight capacity 400 lbs., 1/case

GN-30216B Heavy duty commode II
adjustment height 16.5" - 23.5"
weight capacity 500 lbs., 2/case



Heavy duty commode II

GN-98204 Deluxe padded drop arm commode
adjustment height 20" - 25"
weight capacity 275 lbs., 1/case

GN-30215 Replacement pail and lid, 6/case

GN-98240 Replacement splash guard, 6/case



COMMODOES BY



IN-6496 Heavy duty commode, adjustment height 16" - 22"
weight capacity 450 lbs., 2/case

IN-9630 I-Class All in One Commode, adjustment height 16" - 22"
weight capacity 300 lbs., 4/case

IN-9669 Chrome drop arm commode, adjustment height 17" - 21"
weight capacity 250 lbs., 1/case

IN-9671 I-Class padded drop arm commode, adjustment height 19" - 22"
weight capacity 250 lbs., 1/case

IN-6317 Replacement pail and lid. 12/case

IN-6319 Replacement splash guard, 12/case



Heavy duty



I-Class All in One



Chrome drop arm



COMMODOES BY



- CX-B350** Deluxe 3 in 1 commode, adjustment height 17.5" - 21.5" weight capacity 300 lbs., 2/case
- CX-B352** Standard 3 in 1 commode, adjustment height 17.5" - 21.5" weight capacity 300 lbs., 2/case
- CX-B354** Drop arm commode
18" between the arms, weight capacity 300 lbs.
- CX-B355** Heavy duty commode, adjustment height 19.5" - 23.5" weight capacity 400 lbs., 1/case
- CX-B361** Composite 3 in 1 Commode, adjustment height 18" - 23" weight capacity 300 lbs., 2/case
- CX-B362** Deluxe composite 3 in 1 commode, adjustment height 18" - 23" weight capacity 300 lbs., 2/case
- CX-B364** Universal toilet paper holders, 6/case
- CX-B365** Universal toilet paper holders for composite commodes, 6/case
- CX-B359** Replacement pail and lid, 12/case
- CX-B363** Replacement splash guard, 14/case



Heavy Duty



Composite 3 in 1



Deluxe Composite 3 in 1



Universal Toilet Paper Holders



COMMODOES BY



Adjustable Drop arm



Folding commode



Heavy duty



Heavy duty drop arm

- TF-3220A** Folding commode
Height 19" Clearance 16"
weight capacity 300 lbs., 1/case
- TF-3225** Adjustable drop arm commode
19.5" between the arms
weight capacity 300 lbs., 1/case
- TF-3240** Heavy duty commode
24" between the arms
weight capacity 700 lbs., 1/case
- TF-3243** Extra wide heavy duty drop arm commode
36" between the arms
weight capacity 1000 lbs., 1/case
- TF-3245** Heavy duty drop arm commode
26" between the arms
weight capacity 850 lbs., 1/case
- TF-3247** Heavy duty drop arm commode
23" between the arms
weight capacity 600 lbs., 1/case
- TF-Z001209** Replacement pail and lid, 12/case
- TF-Z001217** Replacement splash guard, 12/case

COMMODOES BY LUMEX

- LX-6433A** Standard drop-arm commode, adjustment height 19" - 23"
weight capacity 300 lbs., 2/case
- LX-6438A** Heavy duty drop-arm commode, adjustment height 19.5" - 23"
weight capacity 400 lbs., 1/case
- LX-7103-4** Standard 3-in-1 commode, adjustment height 15.5" - 23.5"
weight capacity 300 lbs., 4/case
- LX-7446A** Extra wide commode, adjustment height 16.5" - 23"
weight capacity 400 lbs., 2/case



Heavy duty drop-arm



Extra-wide



Standard 3-in-1



Standard drop-arm

We carry a wide variety of Bath Safety products from various manufacturers. If you are looking for speciality items, please contact us for additional assistance.

COMMODOES BY NOVA

- NV-8580** Standard extra-wide commode, adjustment height 19" - 23", weight capacity 450 lbs.
- NV-8590** Heavy duty drop-arm commode, adjustment height 19" - 23", weight capacity 800 lbs.
- NV-8595** Heavy duty extra wide drop-arm, adjustment height 19" - 23", weight capacity 1,000 lbs.



Heavy duty drop-arm



Standard



Heavy duty extra-wide

 **COMMODOES BY SPINNAKER** 



AB-8036 36" bariatric heavy duty



AB-8001 3-in-1 commode



AB-8024 24" commode

 **COMMODOES BY PROBASICS**  by PMI

- PMI-1500** Commode pail w/ lid
- PMI-1501** Splash guard
- PMI-411** Heavy duty commode, adjustment height 18" - 22", weight capacity 400 lbs.
- PMI-412GPC** 3-in-1 commode, adjustment height 18" - 22", weight capacity 350 lbs.
- PMI-413** Drop-arm commode, adjustment height 17" - 22", weight capacity 300 lbs.
- PMI-413BAR** Drop arm commode, adjustment height 18" - 22", weight capacity 650 lbs.



Heavy duty commode



3 in 1 commode



Drop-arm commode

ROLLING SHOWER CHAIRS



Rehab chair with
24" rear wheels

GN-99000



Guardian rehab shower / commode
seat height 22", width 16.5" x 16.5"
stainless steel frame, 24" rear wheels
weight capacity 300 lbs., 1/case

GN-99020

Guardian rehab shower / commode
seat height 22", width 16.5" x 16.5"
Stainless steel frame, 8" casters
weight capacity 300 lbs., 1/case



Rehab chair
with 8" casters

IN-6358

Invacare mobile shower chair
seat height 21", width 22 3/8"
5" swivels and locking rear wheels
weight capacity 250 lbs., 2/case



Mobile shower chair
with 5" rear wheels



Invacare Mariner

IN-6895

Invacare Mariner rehab shower / commode
treaded urethane tires, seat width 18"
weight capacity 300 lbs., 1/case



TFI shower commode

TF-3217

TFI deluxe shower commode
features 5" locking swivel wheels
seat height 19", width 20.5"
weight capacity 300 lbs., 1/case

TF-3235

TFI shower commode
features 5" locking swivel wheels
seat height 21.5", width 22"
weight capacity 300 lbs., 1/case



TFI deluxe shower chair

TOILET SAFETY FRAMES



Guardian

GN-30300

Guardian toilet safety frames
adjustment height 26" - 31"
adjustment width 18" - 24"
weight capacity 200 lbs., 2/case

IN-1392-KD

Invacare toilet safety frames
adjustment height 25.75" - 30"
adjustment width 17.5" - 20.5"
weight capacity 250 lbs., 2/case

TF-5475

TFI toilet safety frames
adjustment height 24.5" - 28.5"
adjustment width 20.5"
weight capacity 250 lbs., 2/case

CX-B356

Carex toilet safety frames
adjustment height 27" - 31"
adjustment width 20" - 22"
weight capacity 300 lbs., 2/case

LX-6460A

Lumex toilet safety frames
adjustment height 28" - 32"
adjustment width 18" - 21"
weight capacity 300 lbs., 4/case



Lumex



Carex



Invacare



TFI

RAISED TOILET SEATS



Economy seat

- GN-30250 Economy raised toilet seat, 3/case
- GN-30260 Raised toilet seat with clamp, 3/case
- GN-30270A Raised toilet seat with arms and lock, 3/case



Raised seat with arms & lock

Guardian raised toilet seats listed above feature a weight capacity of 300 lbs. and are 5" tall.



Adjustable plastic raised seat



I-Class with clamp & arms

- IN-1384 Adjustable plastic raised toilet seat adjustment height 4.5" - 6.5", 3/case
- IN-1391-AP I-Class raised toilet seat w/ clamp and arms 5.5" Tall, 19.25" between arms, 2/case
- IN-1391-A I-Class raised toilet seat w/ clamp, 5" tall, 2/case
- IN-685-4 Economy raised toilet seat, 5" tall, 4/case

Invacare raised toilet seats listed above feature a weight capacity of 250 lbs.

- NV-8300 Adjustable height raised toilet seat Full splashguard, Adjusts from 3" to 6"
- NV-8350 Raised toilet seat w/ clamp, 5" tall
- NV-8351 Raised toilet seat w/ clamp and arms, 5" tall



Adjustable raised seat



Raised seat with clamp

Nova & Lumex raised toilet seats listed feature a weight capacity of 300 lbs.



- LX-6486A Raised toilet seat 4.5" tall, 3/case
- LX-6487A Raised toilet seat w/ armrests 4.5" tall, 2/case



Raised seat w/ arms & clamp



Round seat elevator



- CX-B302 Economy raised toilet seat 5.5" tall, 1/case
- CX-B306 Elongated toilet seat elevator 3.5" tall, 4/case
- CX-B307 Round toilet seat elevator 3.5" Tall, 4/case
- CX-B311 Raised toilet seat w/ arms and clamp 5" tall, 1/case
- CX-B312 Raised toilet seat w/ clamp 5" tall, 1/case



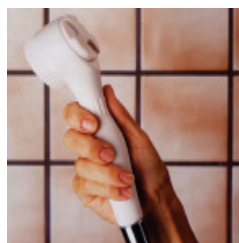
Raised seat w/ clamp



Carex raised toilet seats listed above feature a weight capacity of 300 lbs.

HAND HELD SHOWERS

- CX-B215** Hand held shower, overall length 88.5", retail pack, 6/case
- CX-B215-86** Hand held shower w/ diverter, overall length 88.5", retail pack, 6/case
- CX-B214** Chrome plated diverter, retail pack, 6/case



Hand held shower
by Guardian

GN-98035 Hand held shower with diverter
overall length 86", retail pack, 6/case

GN-98032 Chrome plated diverter, retail pack, 6/case



IN-828-4 Deluxe hand held shower with diverter
overall length 84", retail pack, 4/case

IN-DV401C Chrome plated diverter, retail pack, 4/case



Hand held shower
by Carex



Hand held shower
by Invacare

GRAB BARS

- CX-B201** 8" tall bathtub rail
- CX-B202** Tri-grip bathtub rail, 9" Tall / 17" tall
- CX-B203** Dual level bathtub rail, 17.25" Tall / 12" tall
- CX-B204** White bathtub rail, 13.5" Tall



Carex knurled chrome
plated grab bars

- CX-B209** - 12"
CX-B210 - 16"
CX-B211 - 18"
CX-B212 - 24"
CX-B213 - 32"



8" tall tub rail



Tri-grip tub rail



Dual level tub rail



Nova chrome plated grab bars

- NV-08012CH** - 12"
NV-08016CH - 16"
NV-08018CH - 18"
NV-08024CH - 24"
NV-08032CH - 32"



Nova white grab bars

- NV-08012PC** - 12"
NV-08016PC - 16"
NV-08018PC - 18"
NV-08024PC - 24"
NV-08032PC - 32"



IN-705-4
Invacare I-Class
molded tub bar,
weight capacity 250 lbs.,
4/case

Invacare knurled heavy-gauge steel,
chrome plated grab bars, 3/case

- IN-512-3** - 12"
IN-516-3 - 16"
IN-518-3 - 18"
IN-524-3 - 24"
IN-532-3 - 32"



Invacare soft-touch, white vinyl
coated grab bars, 3/case

- IN-312-3** - 12"
IN-316-3 - 16"
IN-318-3 - 18"
IN-324-3 - 24"
IN-332-3 - 32"



PERSONAL CARE PRODUCTS

- CX-P701** Foam invalid ring
- CX-P702** Inflatable vinyl invalid ring
- CX-P703** Inflatable rubber invalid ring
- CX-P704** Plastic bed pan
- CX-P705** Fracture bed pan
- CX-P706** Female urinal
- CX-P707** Male urinal
- CX-P708** Sitz bath



Portable urinal



Fracture bed pan



Invalid rings



Carex personal care products listed above are shipped in retail boxes



Nova bathmat



Carex bathmat

CX-B216-00 Carex rubber bathmat, size 28" x 16"

NV-093500 Nova rubber bathmat, size 28" x 16"



PEDAL EXERCISERS



Battle Creek Pedlar

BT-315 Battle Creek pedal exerciser, retail box variable resistance w/ pedal straps

DM-2008 Duro-Med pedal exerciser, retail box variable resistance w/ pedal straps

MOIST HEAT PADS



- CH-1030** Theratherm digital moist heating pad, small temperature range 88 degrees - 166 degrees F
- CH-1031** Theratherm digital moist heating pad, medium temperature range 88 degrees - 166 degrees F
- CH-1032** Theratherm digital moist heating pad, standard temperature range 88 degrees - 166 degrees F
- CH-1035** Theratherm retail floor display



MOIST HEAT PADS

Bed Buddy offers a versatile line of reusable hot/cold packs to fit most body types whenever or wherever your body needs treatment.



Body Wrap

BBF-2000-12 Body Wrap

Designed for treatment of neck, shoulder, arm, leg, knee, and back pain. It also helps relieve stomach cramps, tired aching hands and feet and provides relief for nursing mothers. The velcro closure helps to secure it comfortably in various positions.

BBF-1998-12 Hot / Cold Pack

The original "moist" heat pack designed for use in soothing sore muscles, aches, and pains.



Hot / Cold Pack



Sinus Pack

BBF-2015-24 Sinus Pack

Designed specifically for relief of headaches caused from tension, sinus, fever or migraines. Use cold for relief of tired and puffy eyes. A fabulous and invigorating facial refresher!

BBF-5085-12 Back Wrap

Designed specifically for relief of nagging lower back pain, stomach cramps and leg, arm or shoulder aches and pains. Adjustable strap can be comfortably secured in various positions on the body for complete mobility.



Back Wrap



Joint Wraps

BBF-2200-12 Small Joint Wraps

BBF-2210-12 Large Joint Wraps

Designed for relief of overexertion, strains, sprains, arthritis and carpal tunnel syndrome. Two different sizes to fit comfortably around the waist, elbow, knee, ankle, arm or leg. Elastic bands with velcro closures add flexibility and keep wraps securely in place.

BBF-3100-12 Warming Mittens

BBF-3110-12 Warming Footies

Treat your feet, hands and senses to instant soothing warmth with these aromatherapy warming footies and mittens. Each set comes with a lightly fragranced scent pack with eucalyptus - to revitalize, clove - to comfort, and cinnamon - to calm.

Footies



Mittens



BLOOD PRESSURE MONITORS BY AND A&D Medical

- AND-UA-328** Wrist unit, auto inflate, one-button operation
- AND-UA-705VL** Large cuff, digital display, manual inflate
- AND-UA-767PV** One step plus memory, medium cuff, auto inflate
- AND-UA-767PVL** One-step plus memory, large cuff, auto inflate
- AND-UB-512** Family wrist monitor, auto inflate

One-step cuff



Wrist unit



HEMOCARE BEDS



Manual bed

IN-IVC5307 Manual homecare bed weight capacity 450 lbs.

IN-IVC5310 Semi-Electric homecare bed weight capacity 450 lbs.

IN-IVC5410 Full-Electric homecare bed weight capacity 450 lbs.

IN-BAR600 Full-Electric heavy duty homecare bed weight capacity 600 lbs.

IN-IVC5410 LOW Full-Electric low bed - bed only

IN-IVC5410 LOW PKG Full-Electric low bed - package includes bed, mattress and rails



Full-Electric bed



Semi-Electric bed



HEMOCARE BEDS



PMI-88-HB4-BAR Bariatric full-electric bed - bed only, weight capacity 600 lbs.

PMI-HB4-BARPKG Bariatric full-electric bed - package, weight capacity 600 lbs. includes bed, mattress and rails

PMI-5310 Semi-electric bed - bed only, weight capacity 450 lbs.

PMI-5310PKG1 Semi-electric bed package, weight capacity 450 lbs. includes bed, standard mattress and full rails

PMI-5410 Full-Electric bed - bed only, weight capacity 600 lbs.

PMI-5410PKG1 Full-Electric bed package, weight capacity 600 lbs. includes bed, standard mattress and full rails

Call for additional bed packages with your choice of mattress and rails!



HEMOCARE BEDS



Semi-Electric bed

GF-WL0208 Semi-electric bed - bed only, weight capacity 450 lbs.

GF-WL0208PKG1 Semi-electric bed package, weight capacity 450 lbs. includes bed, standard mattress and full rails

GF-WL0208PKG2 Semi-electric bed package, weight capacity 450 lbs. includes bed, extra firm mattress and full rails

GF-WL0408 Full-electric bed - bed only, weight capacity 600 lbs.

GF-WL0408PKG1 Full-electric bed package, weight capacity 600 lbs. includes bed, standard mattress and full rails

GF-WL0408PKG2 Full-electric bed package, weight capacity 600 lbs. includes bed, extra firm mattress and full rails

Call for additional Lumex bed packages to meet your Homecare bed needs!

Beds & Accessories

Homecare Beds

bantex HOMECARE BEDS

AB-9005 Bariatric full-electric bed - bed only
weight capacity 700 lbs.

AB-9005PKG Bariatric full-electric bed package
weight capacity 700 lbs.,
includes bed, mattress and rails



GUARDIAN HOMECARE BEDS

GN-IC5310 Semi-electric "IC Series" bed - bed only

GN-IC5310PKG1 Semi-electric "IC Series" bed package
includes bed, standard mattress and full rails

GN-IC5310PKG2 Semi-electric "IC Series" bed package
includes bed, extra firm mattress and full rails

GN-IC5310PKG3 Semi-electric "IC Series" bed package
includes bed, standard mattress and 1/2 rails

GN-IC5310PKG4 Semi-electric "IC Series" bed package
includes bed, extra firm mattress and 1/2 rails



**All Guardian beds listed feature
a weight capacity of 450 lbs.**



Guardian Bed Package

GN-IC5410 Full-Electric "IC Series" bed - bed only

GN-IC5410PKG1 Full-electric "IC Series" bed package
includes bed, standard mattress and full rails

GN-IC5410PKG2 Full-electric "IC Series" bed package
includes bed, extra firm mattress and full rails

GN-IC5410PKG3 Full-electric "IC Series" bed package
includes bed, standard mattress and 1/2 rails

GN-IC5410PKG4 Full-electric "IC Series" bed package
includes bed, extra firm mattress and 1/2 rails

GOLDEN HOMECARE BEDS

GT-3101 Standard adjustable bed
includes mattress & remote
weight capacity 400 lbs. - twin
weight capacity 600 lbs. - full/que

GT-4101 Luxury adjustable bed
includes mattress & remote
weight capacity 400 lbs. - twin
weight capacity 600 lbs. - full/queen



BED RAILS



Carex bed rails

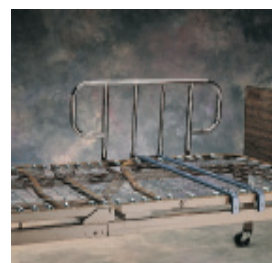


DMI padded bed rails



ProBasics half-length

- CX-P558-CO** Carex home-style bed rails
- GF-6570A-1** Graham-Field full length telescoping bed rails
- GF-6650A-1** Graham-Field half length telescoping bed rails
- IN-6628** Invacare dulexe spring loaded bed rails
- IN-6629** Invacare full length spring loaded rails
- IN-6630** Invacare half length bed rails
- IN-6631** Invacare home-style bed rails
- IN-BAR6640IVC** Half length bed rails for IN-BAR600IVC
- PMI-6035** ProBasics full length telescoping bed rails
- PMI-7035** ProBasics half length telescoping bed rails
- DM-1964** DMI padded bed rail cushions
- TF-8750R** TFI HandiRail home-style bed rail assist
- TF-8752** TFI HandiRail home-style 1/2 bed rail assist
- TF-8754** TFI HandiRail home-style full bed rail assist



Invacare bed rails



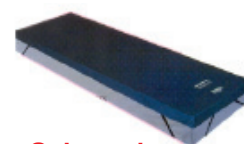
TFI bed assist



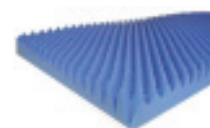
Graham-Field bed rails

HOME CARE BED MATTRESSES

- EM-10** Standard hospital bed mattress, dimensions - 80" x 36" x 6"
- EM-10-F** X-firm hospital bed mattress, dimensions - 80" x 36" x 6"
- EM-10-L** X-long hospital bed mattress, dimensions - 84" x 36" x 6"
- EM-10-L-XF** X-firm & X-long hospital bed mattress, dimensions - 84" x 36" x 6"
- IN-BARMATT** Invacare bariatric bed mattress, weight capacity 600 lbs.
- PMI-BARMATT** PMI bariatric mattress, dimensions - 80" x 42" , weight capacity 700 lbs.
- MX- F0150** Mastex gel mattress overlay, dimensions - 76" x 34" x 3"
- BC-13000** 3" eggcrate pad, economy pack
- BC-14000** 4" eggcrate pad, economy pack



Gel overlay



Eggcrate pad

Beds & Accessories

APP Pads/Pumps & Patient Lifters

APP PADS & PUMPS



Pad and Pump

- GR-GA** Grant APP pad and pump weight capacity 300 lbs.
- GR-A** Grant standard APP pad weight capacity 300 lbs.
- GR-M** Grant heavy duty APP pad weight capacity 300 lbs.
- GR-GM** Heavy duty control unit with M pad



Retail Package

- AB-APP-1000-G** Fixed pressure pad and pump
- AB-APP-1000-P** Standard bubble pad for AB-APP-1000-G
- AB-APP-2000-G** Adjustable pressure pad and pump
- AB-APP-2000-P** Deluxe pad w/ flaps for AB-APP-2000-G



bantex

Pressure Pump

- GF-AQ1000** Fixed pressure pad and pump
- GF-AQ2000-1** Standard replacement pad for GF-AQ1000



Pressure Pad & Pump



- MA-2000PP-ADJ** Adjustable pressure pad and pump
- MA-2000PP-II** Fixed pressure pad and pump
- MA-2001** Standard replacement pad
- MA-2001-FL** Replacement pad with end flaps

PATIENT LIFTERS BY PROBASICS™



Chrome Lifter

- PMI-0075** Hydraulic patient lifter with sling chrome
- PMI-0085** Hydraulic patient lifter powder coated
- PMI-3075** Canvas sling without commode opening
- PMI-4075** Canvas sling with commode opening



Powder-Coated lifter



PATIENT LIFTERS BY



Hydraulic Lift



The Advance

- GN-HML400** Hoyer hydraulic U-base patient lifter - painted lift range: 28" - 77", weight capacity 400 lbs.
- GN-HPL400** Power patient lifter w/ U-base lift range: 28" - 77", weight capacity 400 lbs.
- GN-C-HLA-2** Hydraulic U-base patient lifter - chrome lift range: 29" - 74.5", weight capacity 400 lbs.
- GN-112-P-LC** Standard sling without commode opening Available in canvas or mesh fabric
- GN-113-P-LC** Standard sling with commode opening Available in canvas or mesh fabric
- GN-7000*** Padded canvas U-sling Available in all sizes (S,M,L,XL)
- GN-HOY-ADV-H** The Advance patient lifter by Hoyer



Hydraulic Lift (chrome)

* We carry a wide variety of Guardian and Invacare slings. Call for details, descriptions and pricing.



PATIENT LIFTERS BY



Hydraulic Lift



Reliant Standing Lift

- IN-9805** Hydraulic U-base patient lifter, chrome lift range: 20" - 64", weight capacity 450 lbs.
- IN-9805P** Hydraulic U-base patient lifter, painted lift range: 20" - 64", weight capacity 450 lbs.
- IN-RPA350-1** Reliant standing patient lifter 360 degree rotation, weight capacity 350 lbs.
- IN-RPA450-1** Battery operated power patient lifter 360 degree rotation, weight capacity 450 lbs.
- IN-RPA600-1** Heavy duty power patient lifter lift range: 29 1/2" - 70", weight capacity 600 lbs.
- IN-9046 *** Polyester sling without commode opening
- IN-9047 *** Polyester sling with commode opening



Power Lift



Polyester Slings for Patient Lifters

Beds & Accessories

Accessories

TRAPEZES

- IN-7740P** Invacare fixed offset bed mount trapeze
- IN-7714P** Invacare trapeze floor base
Units can be used as a hospital bed mount (7740)
or as a free standing unit (7740 with 7714)
weight capacity 250 lbs.
- IN-BARTRAP** Invacare heavy duty trapeze unit
weight capacity 600 lbs.
- IN-7030** Invacare full fracture fame
weight capacity 250 lbs.
- GN-IC7740** Guardian bed mount trapeze
weight capacity 250 lbs.
- GN-IC7714** Guardian trapeze floor base
weight capacity 250 lbs.



Bed mounted trapeze



Heavy duty trapeze



Trapeze floor base



Bed mounted trapeze

OVER - THE - BED TABLES



ProBasics
bed tables

AMFAB-950H H-base adjustable, 1/case

PMI-3037 Non-tilt, adjustable height

PMI-3037T Tilt, adjustable height

GF-8900-1 Non-tilt, adjustable height

GF-8900-1A Tilt, adjustable



Graham Field
bed tables

STOR - A - BED RACK



Bed buggy

IN-5140 Bed buggy

IN-5142 Stor-a-bed rack

IN-5143-IVC 4" bed extension kit
Expands 80" bed to 84" long to
accommodates tall patients



4" Extension kit



Stor-a-bed rack



Capri



Monarch



Comforter Series



Comforter Series Wide



Regal



Royal



Pioneer



Williamsburg



Relaxer



MaxiComfort 505

Value Series

Capri - Medium, 2 position, weight capacity 325 lbs.

Monarch - Medium & Large, 3 position, weight capacity 375 lbs.

Available colors: Acorn, Sky Blue, Juniper, Primrose, Walnut (vinyl)

Comforter Series

501S - Small, 3 position, weight capacity 300 lbs.

501M & 501L - Medium & Large, 3 position, weight capacity 375 lbs.

Available colors: Admiral, Cabernet, Evergreen, Palomino, Tan

Comforter Wide Series

Small, 3 position, weight capacity 375 lbs.

Medium, Large, Tall, 3 position, weight capacity 500 lbs.

502 - Infinite position - weight capacity 700 lbs.

Available colors: Admiral, Cabernet, Evergreen, Palomino

Signature Series

Regal - Medium, 3 position, weight capacity 375 lbs.

Royal - Medium, 3 position, weight capacity 375 lbs.

Available colors: Atlantic, Cranberry, Palm, Pecan

Traditional Series

Pioneer & Williamsburg - 3 position, weight capacity 375 lbs.

Available colors: Bouquet, Star Blue, Havana, Hunter, Mauve

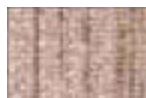
MaxiComfort Series

Relaxer - 3 position, weight capacity 375 lbs.

Available colors: Atlantic, Cranberry, Palm, Pecan

505 - 3 position, weight capacity 375 lbs.

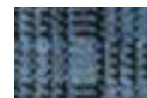
Available colors: Admiral, Cabernet, Evergreen, Palomino



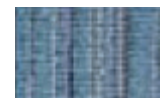
Acorn



Admiral



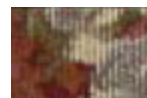
Atlantic



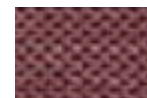
Sky Blue



Star Blue



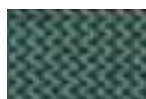
Bouquet



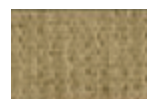
Cabernet



Cranberry



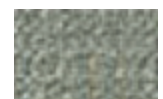
Evergreen



Havana



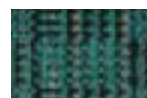
Hunter



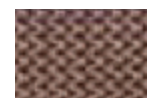
Juniper



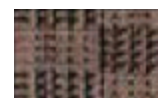
Mauve



Palm



Palomino



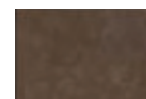
Pecan



Primrose



Tan



Walnut

Lift Chairs

Comfort...Ease...Convenience!

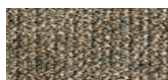


LIFT CHAIRS BY **Pride**
Mobility Products Corp.

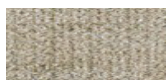


	Model Number	Chair Size	Weight Capacity	Recline Positions	Seat Width	Cushion Back-design
Casual Line	PR-CL10	Medium to Large	325 lbs.	2	20"	Button
	PR-CL15	Medium to Large	325 lbs.	3	21"	Button
	PR-CL20	Medium to Large	375 lbs.	2	20"	Pillow
	PR-CL30	Medium to Large	375 lbs.	3	21"	Split
Gentle Line	PR-GL58	Medium to Large	375 lbs.	2	20"	Button
	PR-GL310	Medium to Large	375 lbs.	3	22"	Button
	PR-GL358S	Petite	375 lbs.	3	19"	Button
	PR-GL358M	Medium to Large	375 lbs.	3	21"	Button
	PR-GL358L	Large to Extra-Large	375 lbs.	3	23"	Button
	PR-GL358XL	Extra-Large	500 lbs.	3	26"	Button
	PR-GL328XXL	Extra-Large	600 lbs.	2	30"	Button
Luxury Line	PR-LL450	Medium to Large	375 lbs.	3	20"	Split
	PR-LL450W	Wide	375 lbs.	3	23"	Split
	PR-LL560	Petite	375 lbs.	3	19"	Pillow
	PR-LL560W	Wide	375 lbs.	3	23"	Pillow
	PR-LL570	Medium to Large	375 lbs.	3	20"	Pillow
	PR-LL570W	Wide	375 lbs.	3	23"	Pillow
	PR-LL575	Extra-Tall	375 lbs.	3	22"	Pillow
	PR-LL585	Medium to Large	375 lbs.	3	20"	Biscuit
	PR-LL590	Extra-Large	375 lbs.	3	27"	Shell
	PR-LL595	Medium to Large	375 lbs.	3	22"	Pillow
Luxury Line - Speciality Models	PR-TMR570T	Medium to Large	375 lbs.	3	20"	Pillow
	PR-LL571	Medium to Large	375 lbs.	3	21"	Pillow
	PR-LL660	Petite	375 lbs.	Infinite/sleeper	19"	Pillow
	PR-LL670	Medium to Large	375 lbs.	Infinite/sleeper	20"	Pillow
	PR-LL805	Medium to Large	300 lbs.	2	20"	Split

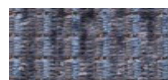
Fabric Selections



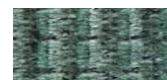
Almond



Oatmeal



Midnight Blue

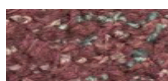


Emerald

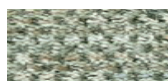


Merlot

Optional Fabrics



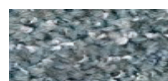
Raspberry



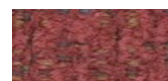
Sage



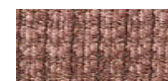
Mocha



Glacier



Rouge



Rose Twist

Padded-Suede



Beach



Olive

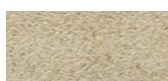


Blue



Expresso

Micro-Suede



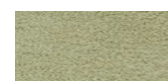
New Khaki



New Latte



Navy



Keylime

Levante Vinyl



Burgundy



Royal Blue



Mushroom



New Chestnut

SLEEP PRODUCTS BY DEVILBISS

DV-9000D CPAP with LCD Display
3 - 20cm pressure, 0, 10, 20, 30, or 45 minute ramp delay, push button altitude compensation

DV-9001D CPAP with LCD display
3 - 20cm pressure, 0, 10, 20, 30, or 45 minute ramp delay, automatic altitude compensation, 3 year on-board compliance pressure transducer, and a 12 volt DC power option.

DV-9054D DeVilbiss RPM AutoAdjust PAP System
In some cases patients require an extra measure of comfort to benefit from their sleep therapy. This unit adapts to each patients needs to ensure optimal clinical benefit.

- Adjustable upper & lower pressure limits.
- Detects adverse mask conditions.
- Ultra-sensitive snoring detection capability.
- Pressure delay - 0 to 240 minutes
- Pressure range - 3 to 20 cmH2O

DV-9055D DeVilbiss RPM BiLevel CPAP
This spontaneously-triggered unit permits independent pressure control of inspiratory and expiratory breathing cycles and high level of respiratory performance monitoring choices to increase patient comfort and enhance clinical value. Auto on/off.

- Pressure delay - 0 to 45 minutes
- Pressure range - 3 to 25 cmH2O



DeVilbiss CPAP's

Standard mask



Shallow mask

- DV-9100D** Cool humidifier
- DV-9200D** Humidifier heater plate
- DV-9352D** Standard serenity silicone mask
- DV-9352S** Shallow serenity silicone mask
- DV-9352G** Standard serenity gel mask
- DV-9352GS** Shallow serenity gel mask



Heater plate



Cool humidifier

INVACARE SLEEP PRODUCTS



IN-ISP2100* Twilight II CPAP mask, available in various sizes



Polaris EX CPAP

IN-ISP3000 Polaris EX CPAP
Designed to increase patient compliance, the Invacare Polaris EX CPAP is equipped with a revolutionary technology called SoftX, named after the soft exhalation sensation it creates. SoftX makes breathing with CPAP feel natural and more comfortable for patients.



Heated Humidifier

IN-ISP4000 Polaris EX heated humidifier
For patients in need of a substantial amount of moisture during treatment, the Invacare Polaris EX EZ-Fill Heated Humidifier is the perfect solution. Attaches easily to the front of the Invacare Polaris EX CPAP. Water chamber features a large, easy-open cap that facilitates filling and cleaning. Temperature adjustment from 70 degrees Fahrenheit to 145 degrees F (5 degree F increments).



CPAP & Humidifier

IN-ISP5000 Polaris EX CPAP w/ SoftX & Polaris EX heated humidifier
The ISP5000 is a kit that includes the Invacare Polaris EX CPAP with SoftX, the integrated EZ-Fill Heated Humidifier, tubing, and a carrying case.

Respiratory Equipment

Oxygen Equipment

CONCENTRATORS

DV-515ADS	5 liter with O ₂ sensor
DV-515ADZ	5 liter without O ₂ sensor
DV-535D	iFill unit w/ 2 M6 cylinders
DV-303DS	3 liter with O ₂ sensor

DEVILBISS



IN-IOH200M9	HomeFill set-up w/ table, 2 tanks and bag
IN-IRC5LX	5 liter without O ₂ sensor
IN-IRC5LXO2	5 liter with O ₂ sensor
IN-IRC10LXO2	10 liter with O ₂ sensor
IN-IRC400	Check O ₂ Plus oxygen analyzer



DeVilbiss Solaris



DeVilbiss iFill



Invacare HomeFill



Invacare Platinum

FINGER PULSE OXIMETER

PMI-8600 Digit-Ox Finger Pulse Oximeter

The Probasics Digit-Ox delivers fast, reliable oximetry in an extremely handy, pocket size solution by combining the monitor and sensor into one unit. While it's small in size Digit is big on performance, providing SpO₂, pulse rate and pulse strength measurements for patients from pediatric to adult. This affordable, non-invasive device offers the convenience clinicians appreciate in EMS, hospital or clinical environments as well as home use.



SUCTION MACHINES

DV-7305P-D	DeVilbiss portable suction machine Vacuum range from 80-550 mmHg Includes bag, canister, tubing, filter and AC adaptor 2 year warranty
DV-7305D-D	High-performance suction machine Vacuum range from 80-550 mmHg Includes bag, canister, tubing, filter and AC adaptor 2 year warranty
PM-60	"Easy Vac" suction machine Vacuum range: 0-26 Hg, 1/5 horsepower pump 5 year warranty
PM-65	"Easy Go Vac" portable suction machine with bag Vacuum range: 0-21 Hg, battery run time: 1.5 hours 2 year warranty on unit, 6 months on battery



DeVilbiss suction machines



Precision Medical suction machines

PRECISION MEDICAL

OXYGEN CYLINDERS

Model Number	Oxygen Capacity cu ft / liters	Outside Diameter in / mm	Overall Length in / mm	Empty Weight lbs / kg
LU-M004	4.0 / 113.3	3.21 / 81.41	9.0 / 228.6	1.9 / 0.8
LU-M006	5.8 / 164.5	3.21 / 81.41	11.8 / 299.0	2.2 / 1.0
LU-M006A	6.0 / 171.1	4.38 / 111.13	7.9 / 201.7	2.8 / 1.2
LU-M009	8.8 / 248.4	4.38 / 111.13	10.6 / 270.0	3.7 / 1.7
LU-MD15	14. / 414.6	4.38 / 111.13	16.2 / 411.2	4.9 / 2.2
LU-ME24	24.1 / 682.2	4.38 / 111.25	25.2 / 639.8	7.3 / 3.3
LU-M060	60.9 / 1723.6	7.2 / 184.15	23.5 / 596.9	22.5 / 10.2
LU-M00M	121.9 / 3452.5	8.00 / 203.20	36.3 / 922.3	40.0 / 18.1



COMPRESSORS & NEBULIZERS



DeVilbiss Combination Package



DeVilbiss Traveler

DV-2655T-RB DeVilbiss combination package
Includes compressor, reusable nebulizer, disposable nebulizer, carry case, filters, manual & informational DVD

DV-2655D DeVilbiss compressor nebulizer



DV-3655D DeVilbiss pulmo-aide compact nebulizer

DV-6910P-DR DeVilbiss Traveler Portable Compressor Nebulizer System

DV-8650D DeVilbiss 50 P.S.I. compressor, flow range: up to 30 LPM

PM-15P

"Easy Air 15" 50 P.S.I. compressor, 19.5 lbs., output: 50 P.S.I. = 16.5 LPM, available with pressure or liter flow gauge



Easy Air 15

OXYGEN HOLDERS



PMI-015B Adjustable handle O₂ cart, 2/case

TF-8720BLK Black adjustable O₂ cart, 2/case

PMI-016 Universal O₂ holder for a wheelchair, 1/case

BF-65062 Universal O₂ holder for a wheelchair, 1/case

IN-1497 O₂ holder for Invacare wheelchair, 1/case



TUBING, MASKS, & CANNULAS



- HD-1115 7' Standard oxygen supply tubing, 50/case
- HD-1119 25' Star Lumen oxygen supply tubing, 25/case
- HD-1120 50' Star Lumen oxygen supply tubing, 25/case
- HD-1103 7' Standard oxygen supply tubing with over the ear cannula, 50/case
- HD-1109 Cannula only, 50/case
- HD-1814 50' Star Lumen oxygen supply tubing with over the ear cannula, 25/case
- HD-1820 7' Star Lumen oxygen supply tubing with Softech cannula, 50/case
- HD-1824 25' Star Lumen oxygen supply tubing with Softech cannula, 25/case
- HD-1825 50' Star Lumen oxygen supply tubing with Softech cannula, 25/case
- HD-1826 7' Star Lumen oxygen supply tubing with Softech pediatric cannula, 50/case
- HD-1075 Adult tracheostomy mask, 50/case
- HD-1076 Pediatric tracheostomy mask, 50/case
- HD-1084 Adult aerosol mask, 50/case
- HD-1085 Pediatric aerosol mask, 50/case
- HD-1680 100' Corrugated tubing, 1/case



HUMIDIFICATION

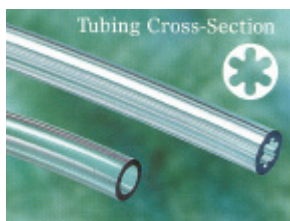
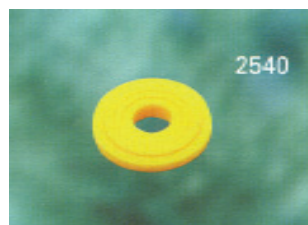
- HD-3230 4 P.S.I. disposable humidifier, 50/case
- HD-3260 6 P.S.I. disposable humidifier, 50/case

AEROSOL DELIVERY SYSTEMS

- HD-1882 Nebulizer with mouthpiece, tee, and tubing, 50/case
- HD-1883 Nebulizer with mouthpiece, flex tubing, tee, and tubing, 50/case

ADAPTERS, WASHERS, ETC.

- HD-1679 Water traps for concentrators
- HD-2540 Nylon washers, 100/case
- HD-2555 Nut and nipple (x-mas tree), 50/case



TUBING, MASKS, & CANNULAS



- BF-33800** Clear curved ped. cannula w/ 7' Sure Flow tubing, 50/case
- BF-33801** Clear curved adult cannula w/ 7' Sure Flow tubing, 50/case
- BF-33208** Clear cannula only, 50/case
- BF-33239** 7' Sure Flow tubing with clear cannula , 50/case
- BF-33242** 25' Sure Flow tubing with clear cannula , 20/case
- BF-33245** 50' Sure Flow tubing with clear cannula , 10/case
- BF-33242** 25' Sure Flow tubing with tinted green cannula, 20/case
- BF-33245** 50' Sure Flow tubing with tinted green cannula, 10/case
- BF-64230** 7' Sure Flow supply tubing, 50/case
- BF-64231** 15' Sure Flow supply tubing, 25/case
- BF-64232** 7' Sure Flow supply tubing, 25/case
- BF-64234** 7' Sure Flow supply tubing, 10/case
- BF-64203** 100' Smooth bore bubble tubing, 1/case
- BF-64041** Simple adult O2 mask with 7' tubing, 50/case
- BF-64083** Adult aerosol mask only, 50/case
- BF-64093** Pediatric aerosol mask only, 50/case



HUMIDIFICATION

- BF-64375** 3 P.S.I. disposable humidifier with plastic nut, 50/case
- BF-64376** 3 P.S.I. disposable humidifier with metal nut, 50/case



We carry pre-filled humidifiers in 500ml and 750ml. Call today for our competitive prices.

AEROSOL DELIVERY SYSTEMS

- BF-61400** Nebulizer with mouthpiece, tee, and tubing, 50/case
- BF-61399** Nebulizer w/ mouthpiece, flex tubing, tee, and tubing, 50/case
- BF-64085** Adult aerosol mask with nebulizer, 50 case
- BF-64095** Pediatric aerosol mask with nebulizer, 50/case



ADAPTERS, WASHERS, ETC.

- BF-65100** Supply line connectors, 200/case
- BF-65401** Nut and nipple (x-mas tree), 50/case
- BF-66080** Plastic cylinder wrench, 50/case
- BF-86060** Stat-O-Seal washers, 50/case
- BF-66099** No smoking signs, 100/case



OXYGEN CYLINDER RACKS BY **PROBASICS**™ by PMI

- PMI-1019** 6 cylinder D/E rack
- PMI-1020** 12 cylinder D/E rack
- PMI-1021** 12 cylinder M6 rack



These heavy duty welded racks are chrome-plated steel with mounting brackets on the bottom.

CONSERVING DEVICES & REGULATORS

PRECISION MEDICAL

- PM-198705** "EasyPulse 5" Conserving by Precision Medical, ratio 5.7:1
- PM-165408D** "EasyDial" Regulator by Precision Medical "H" regulator w/ guage, 4" long, 0-8 LPM
- PM-168708D** "EasyDial" Regulator by Precision Medical "E" regulator w/ guage, 4" long, 0-8 LPM
- PM-168715D** "EasyDial" Regulator by Precision Medical "E" regulator w/ guage, 4" long, 0-15 LPM



Easy Pulse 5

PROBASICS™
by PMI

- PMI-OC-1** Zero to 8 LPM (CGA 870)
- PMI-OC-2** Zero to 15 LPM (CGA 870)
- PMI-OC-3** Zero to 15 LPM (CGA 540) with DISS
- PMI-8200** Dual lumen pneumatic conserver
- PMI-8200H** Dual lumen pneumatic conserver "H" tank, 540 connection
- PMI-8300** "Flo-Rite" Conserving by Probasics, ratio 3:1
- PMI-8300H** "Flo-Rite" Conserving by Probasics, ratio 3:1 "H" tank, 540 connection



Easy Dial



Flo-Rite

- PMI-3EMMR** ProBasics pediatric "E" tank regulator w/ guage, 0-3 LPM
- PMI-8EMMR** ProBasics mini "E" tank regulator w/ guage, 0-8 LPM
- PMI-8HREGX** Probasics "H" tank regulator w/ guage, 0-8 LPM
- PMI-15EMMR** ProBasics mini "E" tank regulator w/ guage, 0-15 LPM
- PMI-15EMMR** ProBasics "H" tank regulator w/ guage, 0-15 LPM



"E" Tank Regulator

DEVILBISS

- DV-PD1000** DeVilbiss PulseDose battery operated conserver



PulseDose

MATTRESSES & ACCESSORIES

PT-1100 AiroDyne Low Air Loss / Alternating Pressure Mattress System

Control Unit Features:

Reacts to patient movement and automatically readjusts air pressure
 Whisper quiet operation (30db@1m)
 Extremely energy efficient, 1 year warranty

Mattress Features:

Twenty 5 1/2" tall air cells with a 2" convoluted foam base
 Air cells made of 70-denier medical grade nylon with polyurethane lamination
 37" width helps eliminate risk of entrapment
 Recommended weight limit: 325 lbs, 1 year warranty
 Waterproof yet breathable PrimaTex cover



PT-1400 AiroDyne Premier Low Air Loss / Alternating Pressure Mattress System

Control Unit features:

Reacts to patient movement & automatically readjusts air pressure
 Choice of four alternating cycle times and float mode
 Visual / audible low pressure and power failure alert
 Whisper quiet operation (30db@1m)
 Firm mode inflates the system rapidly to help nursing procedures and transfers
 Upright mode gives added support to help prevent "bottoming out"
 Extremely energy efficient, 2 year warranty

Mattress Features:

Twenty 8 1/2" tall air cells with a 2" convoluted foam base
 Air cells made of 210-denier medical grade nylon with polyurethane lamination
 37" width helps eliminate risk of entrapment
 Recommended weight limit: 400 lbs, 2 year warranty
 Waterproof yet breathable PrimaTex cover



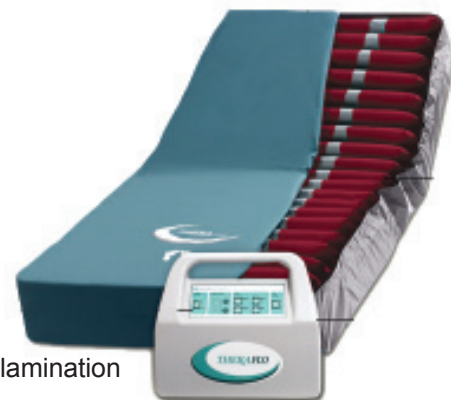
PT-2200 TheraFlo Low Air Loss / Alternating Pressure Mattress System

Control Unit features:

Microprocessor controlled with easy to use control panel
 Hi performance blower for standard and bariatric modes
 Panel lock mode helps to avoid tampering of settings
 Upright mode gives added support to help prevent "bottoming out"
 Extremely energy efficient, 2 year warranty

Mattress Features:

Twenty 8" tall air cells with a 2" convoluted foam base
 Air cells made of 200-denier medical grade nylon with polyurethane lamination
 Various widths: 36", 39", 42", 48", 54", and 60"
 Recommended weight limit: 1,000 lbs, 1 year warranty
 Waterproof yet breathable PrimaTex cover



PrimaTech Fast Inflate Pump
 Pump can inflate or deflate the mattress in minutes!

PT-1100 inflates in under 2 minutes
PT-1450 inflates in under 4 minutes

OUR MISSION STATEMENT

"The ongoing mission of Lake Court Medical is to provide our valued customers with quality products, timely deliveries, competitive prices and a level of service unmatched in the industry."

CAPTAIN'S LOG

We Have Everything Under the Sun



Quickie® Rhapsody Power Chair



Quickie® Prelude Power Chair



Guardian® Bariatric Commode



Guardian® Easy Care 2000 Wheelchair



Guardian® Breezy Ultra 4 Wheelchair



Hoyer® HML400 Lifter



DeVilbiss® Oxygen Fill Station



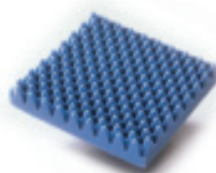
Sunrise Medical® 2655T-RB
Economy Compact Compressor
Retail Package



Guardian® Envoy 480
Rolling Walker



Guardian® Homecare Bed



Bio Clinic®
Foam Eggcrate® surfaces



Jay® Easy Cushion

BIO CLINIC®

DEVILBISS®

GUARDIAN®

HOYER®

JAY®

QUICKIE®

Ask For Invacare® - The #1 Brand For All Your Home Care Product Needs

Invacare offers a complete line of high-quality home care products, from walkers and wheelchairs to beds and oxygen concentrators, and everything in between. Increase patient and referral satisfaction by offering the reliability and durability of Invacare-branded products.

Ask for Invacare® - the #1 brand in home care.



The Invacare brand is known world-wide for quality, innovation, reliability and ease-of-service. Put Invacare to work building your business.

With Invacare, Yes, You Can.



Yes, you can.®